



香港浸會大學  
HONG KONG BAPTIST UNIVERSITY

# Hong Kong Baptist University Foundation

香港浸會大學基金



**Excellence • Innovation • Whole Person Education**  
**卓越 • 創新 • 培育全人**

**2011-2012**  
Annual Report 年報

# Motto, Vision, Mission & Core Values

## 大學校訓、願景、使命及辦學理念

### Motto

Hong Kong Baptist University's motto (篤信·力行), embracing the Christian and Confucian virtues of "Faith and Perseverance", is emblematic of our firm commitment to human values and whole person education.

### Vision

Hong Kong Baptist University aspires to be a premier institution of higher learning providing broad-based, creativity-inspiring education with distinctive contribution to the advancement of knowledge through research and scholarship.

### Mission

Hong Kong Baptist University is committed to academic excellence in teaching, research and service, and to the development of whole person in all these endeavours built upon the heritage of Christian higher education.

### Core Values

Hong Kong Baptist University's cores values include:

- the pursuit of knowledge and truth through a liberal approach to higher education;
- a collegial environment in which scholarship and academic freedom exist in harmony;
- a vibrant caring community with the presence of Christian ethos in the context of a traditional Chinese value system; and
- a strong commitment to both academic excellence and community service.

### 校訓

香港浸會大學「篤信·力行」的校訓，融會基督教及儒家精神，象徵大學人文價值觀及全人教育的理念。

### 願景

香港浸會大學銳意提供啟發創意及多元化的高等教育，透過學術與科研開拓知識新領域。

### 使命

香港浸會大學在教學、研究及社會服務等範疇力臻至善，秉承基督教高等教育的理念，推行全人教育。

### 辦學理念

香港浸會大學的辦學理念包括：

- 以自由開放的高等教育觀，追求知識及真理；
- 捍衛學術自由，營造和諧校園氣氛，讓教學與科研齊驅並進；
- 以傳統中國價值觀念為基礎，佐以基督教精神，建立一個有活力及親和的大學社群；
- 致力追求學術成就及服務社會大眾。





## Contents 目錄

- 02 Chairman's Report  
主席報告
- 06 President and Vice-Chancellor's Message  
校長的話
- 10 University's Recent Developments  
大學最新發展
- 18 Introduction to the Foundation  
基金簡介
- 25 Membership Categories  
會員類別
- 26 Membership Roll  
基金會員芳名
- 34 Foundation Activities  
基金活動
- 42 Financial Report  
財務報告
- 44 Membership Privileges  
會員權益及優惠
- 45 How to Give  
捐資方法

- Chairman's Report  
主席報告

香港浸會大學  
HONG KONG BAPTIST UNIVERSITY

Hong  
Bapti  
Found  
香港浸

*Hong Kong Baptist University Foundation*

香港浸會大學基金晚

4.1

Hong Kong  
Baptist University

*Foundation*

香港浸會大學基金

While the celebrations for the 55<sup>th</sup> Anniversary of Hong Kong Baptist University came to a gratifying conclusion, the University's campus is still abuzz with activity. The implementation of the new academic structure in September 2012 has resulted in the historic "double cohort" intake representing a dramatic increase in student population as well as the launch of new teaching and research facilities. The atmosphere on campus is vibrant and dynamic, further intensified by a series of good news, such as HKBU being named one of the best journalism and media universities for Asian students, the Master's programmes offered by the School of Business gaining international accreditation, and

on the Mainland, enabling them to widen their horizons. The University's Campus Master Plan is progressing well and marked new milestones with the completion and inauguration of the Academic and Administration Building and the Madam Kwok Chung Bo Fun Sports and Cultural Centre, which offer faculty and students enhanced teaching, learning and research environments. I would like to take this opportunity to thank all the organisations and individuals who have donated generously towards the University's development.

Having satisfied and surpassed the fundraising goal in celebration of the University's 55<sup>th</sup> Anniversary earlier on, the



five HKBU scholars being included in the National Science and Technology Programmes Expert Database. Although relatively modest in scale and resources, HKBU is recognised worldwide for its teaching and research efforts, and even leads the world in a number of areas such as Chinese Medicine, Communication, Chinese Classical Learning, Cross-cultural Studies and Advanced Materials Research. Through focusing resources on our niche areas of specialisation, we believe HKBU can take its place among the world's top institutions in terms of teaching and research excellence.

The rising recognition of HKBU's academic achievements is not only the result of the concerted efforts of teachers and students, but also the generous support of passionate individuals, which has enabled the University to implement various meaningful projects of far-reaching impact. In 2012, the University presented the first "Cheung On Tak International Award for Outstanding Contribution to Chinese Medicine" and founded the "Dr. Kennedy Y.H. Wong Endowed Chair of Chinese Medicine" to promote research and development in Chinese medicine. Meanwhile, the fourth "Dream of the Red Chamber Award: The World's Distinguished Novel in Chinese" was held to promote literary creativity in the Chinese-speaking world. Past winners include Mo Yan, who was awarded the Red Chamber Award in 2008 and won the Nobel Prize in Literature 2012. The Institute of Creativity organised numerous public lectures featuring Nobel Laureates and world-class scholars while undertaking a diversity of interdisciplinary research projects to promote a creative ambience at the University through academic exchange and collaboration. The Mainland Experience Scheme has funded many students' short-term studies or internships

Hong Kong Baptist University Foundation has, for the fourth year running, achieved its newly set annual target of raising at least HK\$100 million. The Foundation has also continued to expand in scale. As of December 2012, total membership stands at 324, with 46% of the members having donated to the University in the past year. Most are also staunch, longstanding supporters of the University. We are immensely grateful for having these distinguished individuals as supportive partners who share our vision. Moreover, all existing members of the Board of Governors of the Foundation and the two standing committees – the Entrepreneur Committee and the Alumni Committee – continue to serve and are joined by numerous business leaders and outstanding alumni. The new Board and Committees commenced their term on 1 January 2012 for a period of three years. The Entrepreneur Committee has been bolstered with new blood helping to further strengthen the University's ties with the commercial and industrial sectors and broaden our social network. The Alumni Committee has organised various alumni activities over the past year to reinforce ties among our alumni in addition to launching the HKBU Hostel Donation Campaign to garner support from the alumni community.

On 1 August 2012, the HKSAR Government launched the new round of the Matching Grant Scheme, providing fresh impetus to the University's fundraising endeavours. Over the past year, the University has been blessed with strong support from individuals, organisations and charitable foundations, which has enabled us to improve on various facets of the University and promote teaching and research quality, while helping the University take advantage of the Matching Grant Scheme. The

significant donations included:

- A donation of HK\$5 million was made by Lee Shau Kee Foundation Limited to support the education, health communication and world peace projects of The Carter Center – Hong Kong Baptist University Initiative;
- Mr. Franco Cutrupia, President of C.N.T. Limited, and Mrs. Pauline Wei Cutrupia, Managing Director of C.N.T. Limited, pledged to donate HK\$5 million for the establishment of the “Mr. and Mrs. Franco Cutrupia Mainland Students Scholarship” to enable needy Mainland students to receive Whole Person Education at HKBU;
- Ms. Connie Wong, JP, Managing Director of Wong Sun Hing Limited, and Dr. the Hon. Chan Sui Kau, GBM, GBS, JP, Executive Chairman of Yangtzekiang Garment Manufacturing Company Limited, pledged to donate HK\$5 million and HK\$2 million respectively to support the publication of *Hong Kong History* by the Advanced Institute for Contemporary China Studies;
- Victor and William Fung Foundation Limited pledged a donation of HK\$3 million to support the project entitled “Service Leadership Across the General Education Curriculum and Whole Person Education at Hong Kong Baptist University”;
- Mr. Kwok Ka Sing Raymond, Director of Chart One Limited, made a donation of HK\$2 million towards the Character Development Fund;
- Lam Woo Foundation Limited donated HK\$2 million to support the Journalists-in-Residence Programme of the Department of Journalism;

- Chi Tao Charitable Foundation Limited donated HK\$2 million towards the School of Chinese Medicine Development Fund.

In recent years, the University has launched a number of key projects including the founding of the Institute of Creativity, the Mr. Simon Suen and Mrs. Mary Suen Sino-Humanitas Institute, The Carter Center – Hong Kong Baptist University Initiative, the HKBU Changshu Research Institute, and the Jao Tsung-I Academy of Sinology, as well as plans to establish the first Chinese medicine teaching hospital in Hong Kong. These are all efforts to consolidate the University’s research strengths and expand its commitment to serving the community. Each of these projects requires significant funding support. To help the University execute these farsighted projects, the HKBU Foundation has taken it upon itself to be the powerhouse of the University’s sustainable development.

The University relies on the valuable support of society in making its various advancement projects a success. If you share our education vision and ideals, we sincerely invite you to join the HKBU Foundation and be part of the force helping the University pursue excellence and innovation, building HKBU into a world-class university to nurture young leaders for our society.



**Wilfred Wong, SBS, JP**

Chairman, Board of Governors  
Hong Kong Baptist University Foundation



五十五周年校慶活動雖已圓滿結束，但浸大校園並沒有平靜下來，新學制於二零一二年九月正式實施，歷史性的「雙班年」令學生人數倍增，加上新的教研設施陸續啟用，校園四周一片蓬勃，充滿活力。與此同時，浸大榮膺亞洲學生首選的新聞及媒體大學之一、工商管理學院開辦的碩士課程獲頒國際認證、浸大五位學者入選「國家科技計劃專家庫」等好消息，同樣令人雀躍萬分。儘管浸大的規模較小，資源緊絀，但在教學和研究方面均獲世界認可，部份領域更居領導地位，例如中醫藥、傳理、國學、跨文化研究、先進材料研發等。我們相信透過集中資源發展這些具優勢的範疇，浸大將可以憑藉卓越的教研成就成為世界知名的頂尖學府。

事實上，浸大的學術地位與日俱增，除了是師生共同努力的

成果外，亦端賴熱心人士的慷慨支持，令大學得以實行各項有意義又影響深遠的計劃。其中，浸大於二零一二年頒發首屆「張安德中醫藥國際貢獻獎」及設立「黃英豪博士中醫藥講座教授席」，推動中醫藥研究和發展；舉辦第四屆「紅樓夢獎：世界華文長篇小說獎」推動華文小說創作，而今屆諾貝爾文學獎得主莫言亦曾於二零零八年獲本校頒發此獎項；「創意研究院」主辦了多場諾貝爾得主及世界級學者講座，並推展多項跨學科研究項目，促進學術交流和協作，營造創意氛圍；「內地體驗計劃」資助不少學生到內地參與短期實習或學習課程，擴闊視野；「校園總體發展規劃」進行得如火如荼，新教學及行政大樓和郭鍾寶芬女士康體文娛中心落成啟用，為師生締造卓越的教研及學習環境。我謹此衷心感謝曾經捐資大學發展的所有機構和人士。

香港浸會大學基金成立迄今四年，繼早前超額完成為慶祝五十五周年校慶而定下的籌款目標後，基金再接再厲，於過去一年成功突破每年籌募最少港幣一億元的最新目標。至於基金的規模亦持續增長，截至二零一二年十二月底，基金會員人數達三百二十四人，當中四成半會員曾於過去一年捐資予大學，過半數更是浸大長期的支持者，大學能有這些志同道合的伙伴，非常感恩。另一方面，基金董事局及轄下兩個委員會——企業家委員會及校友委員會各成員應邀留任，並有多位商界領袖及傑出校友加入，新一屆任期由二零一二年一月一日起生效，為期三年。企業家委員會再次加強陣容，進一步協助大學加強與工商界的聯繫，拓闊社會網絡。而校友委員會亦於去年舉辦了多項活動維繫校友關係，並推出「學生宿舍捐助計劃」向校友募捐。

香港特區政府於二零一二年八月一日推出新一輪配對補助金計劃，為大學籌款增添動力。過去一年，大學繼續得到社會人士、機構及慈善基金的鼎力支持，優化大學各方面的工作，提升教研質素，力臻至善，同時為大學爭取到不少配對補助金。大額捐款包括：

- 李兆基基金有限公司捐資港幣五百萬元，襄助「卡特中心——香港浸會大學項目辦公室」在教育、健康推廣及世界和平等項目上的工作；
- C.N.T. Limited總裁古楚璧先生及總經理魏昭鳳女士雅諾捐資港幣五百萬元，襄助大學設立「古楚璧伉儷內地生獎學金」，藉此資助家境貧困的內地生到浸大接受全人教育；
- 王新興有限公司董事總經理王惠貞女士，JP及長江製衣廠有限公司董事會主席陳瑞球博士，GBM，GBS，JP分別雅諾捐資港幣五百萬元及港幣二百萬元，支持當代中國研究所領導的《香港通史》出版計劃；
- 經綸慈善基金有限公司承諾捐資港幣三百萬元，襄助大學透過全人教育及通識教育課程，向學生推廣服務領導的理念；
- 榜霸有限公司董事郭家聲先生捐資港幣二百萬元，資助品格培育基金；
- 林護紀念基金捐資港幣二百萬元，支持傳理學院新聞系的「資深記者駐校計劃」；
- 智韜慈善基金有限公司捐資港幣二百萬元，襄助中醫藥學院發展基金。

大學近年推出了多項重點計劃，包括成立創意研究院、孫少文伉儷人文中國研究所、卡特中心——香港浸會大學項目辦公室、香港浸會大學常熟研究院、饒宗頤國學院等，以及籌建香港首所中醫教學醫院，藉此鞏固浸大在相關研究領域的優勢，並擴展大學對社會的服務，而這些發展項目均需要龐大的資金支持。為幫助大學落實這些高瞻遠矚的計劃，香港浸會大學基金肩負起籌款重任，作為浸大持續發展的最強後盾。

浸大銳意推行的各項發展計劃，必須倚仗社會人士鼎力襄助，以底於成。倘若您和我們擁有相同的教育理念和抱負，誠邀您加入香港浸會大學基金，與我們攜手並肩，襄助浸大繼續追求卓越、創新，晉身世界一流學府之列，為社會培育年青領袖。

王英偉

王英偉，SBS，JP  
香港浸會大學基金  
董事局主席



- President and Vice-Chancellor's Message  
校長的話

香港浸會大學  
HONG KONG BAPTIST UNIVE



After years of preparation, the 3-3-4 academic structure has been implemented in the local higher education sector in 2012. This signifies a new milestone for the education system of Hong Kong. The academic reform aims at broadening our students' horizons and promoting multilateral thinking, enabling them to better adapt to the globalised world. HKBU has always upheld the education ideals of our founders and was a pioneer in promoting Whole Person Education. Over the past year, we have been gratified that the University was able to smoothly implement the academic reform which involved launching the four-year curriculum, recruiting new teaching staff, and planning class, traffic, and catering arrangements. Students can benefit from a

I have often met and exchanged views with our colleagues, students, alumni and friends of the University, and deeply feel the care and love of the University community for HKBU. *Vision 2020*, a development plan we formulated earlier on, has three strategic focus areas: Quality Teaching and Learning, Innovative Research, and Dedicated Service to the Community. With the concerted efforts of the entire University community, notable achievements have been achieved in all three areas over the past year. On the teaching front, our teachers and students have gained numerous awards both globally and regionally, which is again a testament to the teaching excellence of the University.



more capacious, advanced, interactive, and green learning environment through the multiple new facilities that have been completed.

The seven HKBU Graduate Attributes have clearly defined Whole Person Education in the 21<sup>st</sup> century. The ideals of Whole Person Education have also been incorporated in greater depth under the new academic structure. Leveraging a flexible structure for General Education courses, through interdisciplinary curricula, teaching and learning practices and co-curricular activities, students have more opportunities to develop pluralistic skills, preparing them to contribute responsibly to society and to gain a firm foothold in a globalised world. Recently, HKBU scholars designed the first localised Whole Person Development Inventory enabling students to assess their progress in whole person development and to formulate their own development plan. According to the world university rankings published by Quacquarelli Symonds in 2011, HKBU graduates were rated among the top 100 by interviewed employers, indicating that employers highly appreciate the performance of our graduates in the workplace. This has affirmed the success of our years of consistently delivering Whole Person Education, and represents a great step forward in achieving our University's vision of becoming the best regional provider of Whole Person Education.

In the past 30 months since I assumed office, I have cherished the remarkable collaborative strength of the HKBU team.

In terms of research, we were delighted to see our colleagues actively applying for research grants last year, resulting in a 30 per cent increase in applications submitted to the Research Grants Council of the University Grants Committee. The amount of grants obtained from successful applications was double that of the previous year. Research performance in all disciplines was also satisfactory, with four times more patent applications filed compared with the previous year. Meanwhile, HKBU plans to offer joint programmes with overseas universities leading to doctoral degrees in Physics and Geography to provide students with a more flexible learning platform. HKBU's Shenzhen Research Centre, which opened in early 2012, combines the strong expertise in scientific research of the Faculty of Science and the School of Chinese Medicine. The HKBU Changshu Research Institute, located in the Changshu Economic and Development Zone, will be inaugurated in early 2013 to promote interdisciplinary research and knowledge transfer in addition to offering postgraduate programmes so as to boost the research capabilities of the University.

HKBU has always been committed to serving the community. The revitalised Lui Seng Chun commenced services last year and soon became a historical and cultural landmark in the community. Lui Seng Chun provides a comprehensive range of Chinese medicine services to the public while preserving the ancient tradition of Chinese medicine. Our plans to build the first Chinese medicine teaching hospital in Hong Kong are underway and, once implemented, will be a major

breakthrough in the development of Chinese medicine for the betterment of society. In addition, the University has always attached great importance to the preservation and promotion of Chinese heritage and culture. The Dream of the Red Chamber Award and the International Writers Workshop – both unique to HKBU – as well as the recently founded Mr. Simon Suen and Mrs. Mary Suen Sino-Humanitas Institute have gained recognition in academia worldwide. Recently, HKBU applied to the Mainland Government for a plot of land for the construction of the Jao Tsung-I Academy of Sinology in the hope of further promoting the shared vision of Professor Jao Tsung-I and HKBU of academic excellence in the area of Chinese classical learning.

To offer their students and scholars opportunities in the globalised world, top universities around the world have been actively engaged in internationalisation initiatives through collaborations with overseas institutions. In the 2011/2012 academic year, the University welcomed over 200 exchange students from 26 countries and regions, while over 200 HKBU students left for exchange studies abroad. The University is currently negotiating more student exchange opportunities with numerous institutions in Taiwan and overseas countries. The University also continues to cultivate an internationalised learning experience on campus. In collaboration with three local universities, HKBU will lead the European Union Academic Programme Hong Kong with a budget of HK\$14

million co-funded by the European Union and participating institutions. The programme, which will run for four and a half years, aims to promote deeper understanding of the European Union among local students.

A recent development in the university sector was the world-renowned University of Cambridge, which boasts eight centuries of history, issuing bonds for the very first time to raise funds for its development. This clearly illustrates the vital importance of financial resources for the institutional advancement of a university. We are deeply grateful to the Hong Kong Baptist University Foundation for its efforts, and are particularly thankful to all donors, organisations, charitable foundations and community leaders who have staunchly supported the University through their financial contributions, care and concern, and brilliant ideas, enabling us to strive continuously for excellence. Your great expectations of HKBU shall power our determination to forge ahead and scale new heights.

**Albert S.C. Chan, JP**  
President & Vice-Chancellor, HKBU



籌備已久的三三四學制於二零一二年在香港高等院校正式實施，標誌著香港的教育制度邁向新里程。學制改革的目標是期望學生能夠培養宏觀的視野，掌握多角度思維，更好迎接世界全球化的大趨勢。香港浸會大學一貫秉持先賢立下的教育理想，在推動全人教育文化中擔當先導的角色。過去一年，我們很慶幸浸大在落實學制改革方面，無論是課程、招聘教授、交通、課堂和膳食等種種安排均大致暢順，學生能夠在多項新落成的設施中，享受更寬敞、更先進、更綠化以及更互動的學習環境。

浸大的七大「畢業生特質」，為二十一世紀全人教育發展釐定了清晰的目標，而全人教育理念，在新學制下亦得以進一步深化。靈活的通識課程結構，配合優化的跨學科課程、教學實踐及課外活動，使學生有更多機會從中發展多元才能，以改進社會為己任，在全球化的世界中立足。最近浸大學者設計了首個本地化的全人發展量表，讓學生自我評估個人全人發展狀況，協助學生制訂個人成長計劃。根據二零一一年

國際高等教育機構Quacquarelli Symonds發表的世界大學排名榜，受訪僱主對畢業生的評價，浸大名列一百位內，反映浸大畢業生的就業表現獲得僱主青睞，肯定了我們多年來以全人教育理念辦學的成效，大大鼓勵我們竭力邁向大學的願景——成為亞洲區提供全人教育的最佳學府。

上任兩年半以來，我時刻感受到浸大團隊集結的龐大力量。我經常與教職員、學生、校友及大學友好會面和交流，深深感受到大家對浸大的關愛。《二零二零年願景》以「高素質教與學」、「創新研究」和「致力服務社會」三個範疇為策略發展重點，過去一年，在浸大同仁上下一心努力下，這三方面的發展均取得良好的成果。教學方面浸大師生頻頻取得世界級和區域的獎項，再次印證大學的教學素質具備卓越的水平。

而在研究方面，去年我們喜見各同事踴躍申請研究資助，單是教資會轄下研究資助局的研究申請數目，已較

上一學年大幅增加了百分之三十，成功獲得的研究金額總數更是上一年度的兩倍。各學科的研究表現亦見佳績，專利申請數目比對上年度激增四倍。此外，浸大將與海外的大學合辦物理科和地理科的聯合博士學位課程，提供更富彈性的學習平台；二零一二年初開幕的香港浸會大學深圳研究中心，匯聚了理學院和中醫藥學院的強大科研力量；而大學在江蘇常熟經濟發展區興建的香港浸會大學常熟研究院即將於今年初落成，將有助大學提供更多跨學科研究、知識轉移項目和研究課程，提升大學整體的科研實力。

浸大一直以致力服務社會為己任。經活化後的雷生春堂於去年投入服務，迅即成為區內歷史文化的地標，同時亦為社區提供多元化的中醫醫療服務，肩負起發揚中醫藥傳統的使命。而我們銳意成立香港首所中醫教學醫院的目標，若能成事，將是中醫藥發展的一大突破，造福社群。另一方面，浸大一向重視中國文化的傳承，致力推廣中國傳統文化教育，浸大獨有的紅樓夢獎、國際作家工作坊以及新成立的孫少文伉儷人文中國研究所，於國際學術界已得到認同。最近浸大再接再厲，向內地政府爭取用地，於深圳籌建饒宗頤國學院，期望把饒教授及本校的國學研究進一步發揚光大。

面對全球化的挑戰，世界各地的頂尖大學都銳意推動國際化，拓展與海外的聯繫。二零一一至二零一二學年，浸大合共有二百多位來自二十六個國家或地區的交流生來港就讀，同時亦有二百多位浸大學生遠赴海外交流，而大學亦積極與台灣及海外等多間學府商討，爭取促成更多的交換生合作計劃。另一方面，大學繼續把國際化的學習體驗帶進校園，浸大正牽頭一項與本地三間大學合作的「香港歐洲聯盟學術計劃」，計劃為期四年半，獲歐盟及合作院校資助港幣一千四百萬元經費，期望香港的學生對歐洲聯盟有更深入的認識。

具八百年歷史的名校劍橋大學近期首次發債，爭取更多資金支持大學的發展，說明了大學發展不可或缺的是財政資源。我們衷心感謝香港浸會大學基金的努力，特別感激各捐款人、機構、慈善基金、社會賢達一直透過慷慨捐款、關懷鼓勵、出謀獻策給予浸大鼎力支持，鞭策我們精益求精，追求卓越。大家對浸大寄予的厚望，將成為我們發展的動力，攜手並進，再創高峰。

# 陳新滋

陳新滋，JP  
香港浸會大學校長



# University's Recent Developments 大學最新發展



## New Undergraduate System 新學制實施



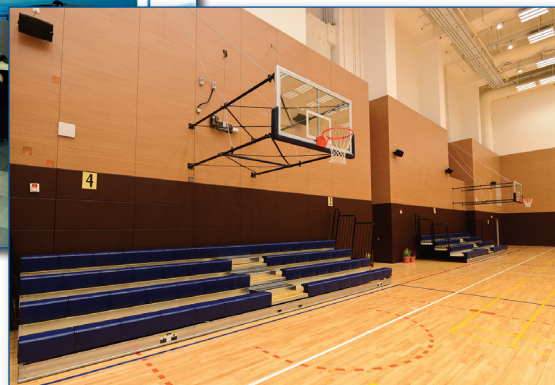
With the implementation of the 3-3-4 academic reform, the University welcomed more than 3,500 new undergraduate students, comprising the first batch of four-year students and the last batch of three-year freshmen, in this historic double-cohort year. Great effort has gone into designing a strong General Education programme and enhancing our existing academic programmes to ensure that students will be well-equipped with the seven HKBU Graduate Attributes.



「三三四」新學制正式推行，歷史性的「雙班年」迎接了逾三千五百名本科新生，包括首批四年制和最後一批三年制的新同學。我們用心設計通識教育課程的同時，也加強現有學術課程的內容，著重培養學生的廣博知識及多元才能，確保他們具備應有的七大浸大畢業生特質。



To prepare for the arrival of our new students and to equip ourselves for the University's sustainable development, we have devoted a great deal of effort to building new campus facilities and expanding usable space. The opening of the Academic and Administration Building and the Madam Kwok Chung Bo Fun Sports and Cultural Centre marked the successful completion of phase 3 of the Campus Expansion Plan, which was launched in 2007. The new buildings provide comprehensive facilities including a 400-seat auditorium, 26 classrooms, the University's largest Learning Commons with an area of 1,300 square metres, student amenities rooms, a canteen, a multi-purpose hall, a gymnasium and rooftop recreation areas. The University also developed a low-cost instant response system called iClickers™ using mobile phones to enhance the engagement of students in active learning and to sustain a vibrant learning environment in large classes.



大學投放了大量資源興建新的校園設施及擴充可用的空間，讓同學在更佳的环境裡學習和活動，同時滿足浸大持續發展的需要。教學及行政大樓和郭鍾寶芬女士康體文娛中心落成啟用，標誌著二零零七年展開的「校園擴建計劃」第三期圓滿結束。新建設施包括四百座位會堂、二十六個課室、全校最大的「學習共享空間」（佔地一千三百平方米）、數個多用途學生活動室、食堂、多用途會堂、體育館和天台康樂場地等。此外，大學研發了一項成本低廉的iClickers™技術系統，學生可以使用手機發短訊，即時回應講師的提問，增加課堂互動，同時提升學習動力。

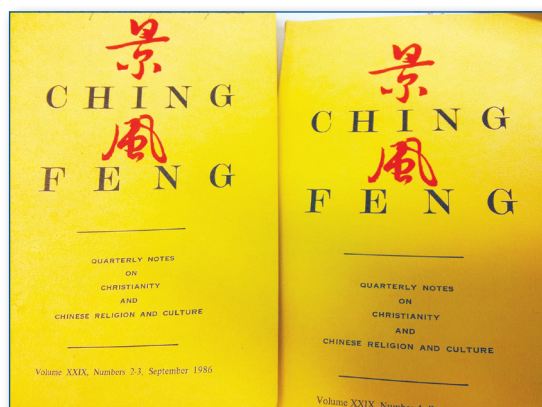
### Worldwide Recognition 國際認同

The University's academic and research achievements have been widely recognised in ranking exercises and by international authorities. In the Quacquarelli Symonds Asian University Rankings 2012, HKBU was ranked as the 48<sup>th</sup> best university in Asia. The well-known journalism website *Asian Correspondent* named HKBU as one of best journalism and media universities for Asian students. The University was the only tertiary institution in Asia to win this accolade. The School of Business received accreditation from the Association of MBAs, an impartial international authority on postgraduate management education, for its Master of Business Administration and Master of Science in Business Management programmes.

浸大的學術及研究成就，備受大學排名評核及國際權威機構認同。在國際高等教育研究機構 Quacquarelli Symonds 的「二零一二亞洲大學排名榜」中，浸大名列第四十八位。浸大亦獲著名新聞網站 *Asian Correspondent* 列為亞洲學生首選的新聞及媒體大學之一，是亞洲唯一獲此殊榮的高等學府。工商管理學院的「工商管理碩士」及「商業管理理學碩士」課程獲得國際權威學術評審機構「工商管理碩士課程協會」頒發認證，標誌著學院的優質工商管理教育得到國際認許。



### International Collaboration 國際協作



HKBU and Yale University signed an agreement of collaboration under which the Yale Divinity School Library and the HKBU Library will join hands to preserve documentation related to Chinese Christianity and to enrich their contemporary Chinese Christianity collections, especially works written in Chinese. HKBU is the first Asian university to collaborate in such a long-term project with Yale.

浸大與美國耶魯大學簽訂協議，進行一項耶魯大學神學院圖書館與浸大圖書館的長期合作計劃，旨在保存華人基督教文獻，並加強兩間圖書館的當代華人基督教館藏，尤其是中文資料。浸大是首間與耶魯大學進行這類長期合作計劃的亞洲學府。



**H**KBU entered into a contract with the European Union to launch a European Union Academic Programme Hong Kong (EUAP), which is a joint venture of four local universities, namely The University of Hong Kong, The Chinese University of Hong Kong, Lingnan University and HKBU, the consortium leader. The EUAP is designed to strengthen EU-Hong Kong relations through academic work and network-building with local, regional and European partners. This is the largest internationalisation project the University has ever undertaken, with a funding of HK\$14 million from the European Union and the four universities.

**歐**洲聯盟與浸大達成協議，成立「香港歐洲聯盟學術計劃」。該計劃由浸大牽頭推行，與香港大學、香港中文大學和嶺南大學攜手合辦，透過學術活動及聯繫本地、區內及歐洲相關組織，加強歐盟與香港之間的關係。此乃浸大創校以來最大型的國際化項目，由歐盟及四所合作院校共同出資港幣一千四百萬元。

## Strengthening Cross-Border Ties 加強兩岸聯繫



**T**he opening of the HKBU Shenzhen Research Centre at the Shenzhen Virtual University Park marks an important advance in the University's innovative research work. The scientific research results of the Centre will help solve society's long-standing air pollution, life science, medical and energy problems, benefiting Hong Kong, Shenzhen and the nation as a whole.

**位**於深圳市高新區虛擬大學園的香港浸會大學深圳研究中心開幕，標誌著浸大的創新研究工作邁向新里程。研究中心結出的科研成果將有助解決大氣污染、生命科學、醫學、能源等方面長期困擾社會的難題，為香港、深圳和國家建設作出貢獻。

**H**KBU signed a three-year Agreement of Co-operation on Multilateral-Transborder Entrepreneurship Exchange Program with Nanjing University, Macau University of Science and Technology, and National Central University in Taiwan to nurture future young entrepreneurs with a global perspective and an innovative spirit for the Greater China region.

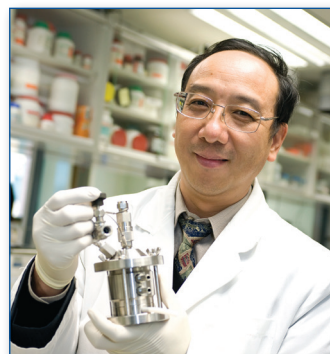
**浸**大與南京大學、澳門科技大學和台灣的國立中央大學簽署為期三年的「兩岸四地大學生創業交流項目」協議，藉著內地、港、澳、台四地和四所合作院校的優勢，為大中華區培育具有國際視野與創新精神的未來青年創業家。



## Research Excellence 卓越研究

**D**r. Yang Zhijun, Assistant Professor of the School of Chinese Medicine, in collaboration with researchers from Beijing, Shenzhen and Hong Kong, has achieved a breakthrough in developing a novel therapy for treatment of osteoporosis. The team developed a system that could enhance bone formation, which outlined a new approach for treating osteoporosis.

**中**醫藥學院助理教授楊智鈞博士參與一項由北京、深圳及香港科研專家聯合進行的學術研究，在骨質疏鬆症治療方面取得突破性發展，成功研製一種有效促進骨形成的系統，為治療骨質疏鬆症提供了新方向。

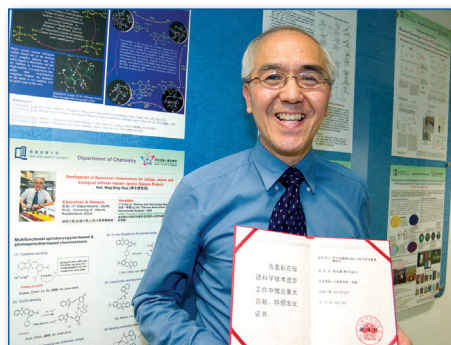


**P**rofessor Tang Tao, Associate Vice-President and Dean of Science, was named 2012 Fellow of the Society for Industrial and Applied Mathematics in recognition of his contribution to computational fluid dynamics, particularly to the development of adaptive algorithms. He was the only Asian Fellow in that year.

**協**理副校長兼理學院院長湯濤教授當選「二零一二年美國工業與應用數學學會院士」，成為該年度唯一當選的亞洲學者，以表揚他對計算流體動力學研究，特別是自適應算法的貢獻。

**P**rofessor Chan Wing Hong of the Department of Chemistry, together with research team members from Hunan University and Peking University, was granted the "First Class Natural Sciences Award" in the 2011 Excellent Science Research Achievement Award for Higher Institutions. The Award was conferred by the Ministry of Education, China.

**化**學系陳永康教授參與由湖南大學和北京大學學者所組成的研究團隊，獲得國家教育部頒發二零一一年高等學校科學研究優秀成就獎（科學技術）中的「自然科學一等獎」榮譽。



**T**he paper entitled "The Impact of New Relationship Tactics and Customer Value on Commitment" co-written by Dr. Noel Siu, Associate Professor, and Dr. Tracy Zhang, Assistant Professor of the Department of Marketing; Miss Yan Kwan, PhD student of the School of Business; and Miss Dong Ping, PhD student of the University of Toronto, won the Best Paper in Track prize at the Academy of Marketing Conference 2012 in the United Kingdom.

**工**商管理學院市場學系副教授蕭霍綺文博士、助理教授張軍鳳博士、博士生關可欣小姐與多倫多大學博士生董萍小姐合撰的論文「The Impact of New Relationship Tactics and Customer Value on Commitment」，在英國舉行的 Academy of Marketing Conference 2012 中獲頒「Best Paper in Track」獎。

Professor Clara Ho of the Department of History received a Senior Research Award of the Research Grants Council – Fulbright Hong Kong Scholar Program 2012-13. She will spend ten months as a Fulbright visiting scholar at the College of Social Sciences and Humanities, Northeastern University, Boston.

**歷史系**劉詠聰教授獲頒「研究資助局—富布賴特（香港）學人計劃二零一二至一三年」高級研究獎項。劉教授將前往美國波士頓東北大學社會科學與人文學院，作為期十個月的富布賴特訪問學人。



Dr. Tang Man Lai, Associate Professor of the Department of Mathematics, won the Second Class Prize in the Natural Science of Yunnan Province award scheme in 2011 for a collaborative research project entitled “Biostatistics: Theory and Methods”.

**數學系**副教授鄧文禮博士憑一項協作研究項目「生物統計的理論和方法研究」，獲頒二零一一年度雲南省自然科學獎（二等獎）。

Professor Ken Yung of the Department of Biology was awarded the Overseas, Hong Kong and Macau Young Scholars Collaborative Research Fund by the National Natural Science Foundation of China. The grant of RMB 2 million will support a research project on the application of traditional Chinese medicines in drug rehabilitation.

**生物系**翁建霖教授獲「國家自然科學基金：海外及港澳學者合作研究基金」撥款人民幣二百萬元，資助與內地學者合作研究傳統中藥如何應用於戒除毒癮。



Professor Raymond Wong, Chair Professor and Associate Head of the Department of Chemistry, was presented with the Distinguished Lectureship Award by the Chemical Society of Japan at its 92<sup>nd</sup> Annual Meeting in recognition of his outstanding work in photo-functional materials chemistry. He was also awarded the 2012 Ho Leung Ho Lee Foundation Prize for Scientific and Technological Innovation (Award for Youth Innovation) to recognise his contribution to promoting scientific and technological innovation in advancing energy-related technologies.



**化學系**副系主任及講座教授黃維揚教授在第九十二屆日本化學會年會上獲頒本年度「傑出講學獎」榮譽，以肯定他在光功能材料化學上所取得的卓越成績。黃教授並榮獲「二零一二年何梁何利基金」頒發「科學與技術創新獎（青年創新獎）」，以表揚他在創新科技及節能方面的貢獻。

## Giving Back 回饋社會



### Revitalised Lui Seng Chun 雷生春活化成中醫藥診所

The more than 80-year-old Grade I historic building Lui Seng Chun was revitalised as a Chinese medicine clinic, providing a comprehensive range of quality Chinese medicine specialty services to the public, together with special offers provided for the underprivileged and the elderly. The clinic will also arrange regular health talks and guided tours to promote Chinese medicine and healthcare education to the community.

具有逾八十年歷史的一級歷史建築—雷生春，經活化後成為「香港浸會大學中醫藥學院—雷生春堂」，為大眾市民提供多元化的優質中醫專科醫療服務，並為綜援人士及長者提供診症優惠。雷生春堂亦會定期舉辦健康講座和導賞服務，藉此普及中醫藥知識和推行健康教育。

### Caring for Earthquake Victims 關愛四川地震災民

Twenty-one HKBU students trained in positive psychology joined the “Positive Psychology Express” Psychological Service Trip to Sichuan to care for those affected by the devastating earthquake in 2008 and to spread happiness and hope to them.

二十一位曾接受正向心理學訓練的浸大同學，參加「晴心送四川」心理服務交流團，彰顯關愛精神，向二零零八年受四川大地震影響的小朋友及村民傳播快樂和希望的訊息。



### Conserving the Environment 環境保護

HKBU's Hong Kong Organic Resource Centre organised a scheme entitled “Amway Organic Farming at Primary Schools in 18 Districts” to promote organic farming among youngsters. Workshops and activities led by volunteers were held to build a culture of organic farming in the local community.

浸大香港有機資源中心舉行「Amway 18區校園有機小農夫計劃」，讓小學生親身體驗有機耕種。透過在小學建立有機園圃、舉行親子活動、農夫分享及培育義工等，在香港推動都市農耕。

### Promoting Art Education 推動藝術教育

HKBU's Institute of Creativity, the Education Bureau and the Hong Kong Arts Development Council jointly launched a project entitled “Arts Buddies” to enhance university and secondary school students' knowledge of and skills in art appreciation and art promotion, and to cultivate a positive attitude to serving the community through art activities.

浸大創意研究院與教育局和香港藝術發展局合辦一項名為「藝術同行」計劃，旨在提升中學生和大學生在藝術欣賞和藝術推廣方面的知識和技巧，同時亦鼓勵他們透過參與藝術活動，培養出為他人服務的正確態度和精神。

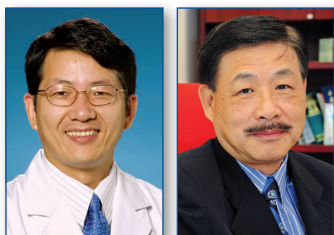


## Outstanding Achievements 傑出成就



Five HKBU's scholars, namely Professor Albert Chan, President and Vice-Chancellor, Professor Rick Wong, Vice-President (Research and Development), Professor Tang Tao, Associate Vice-President and Dean of Science, Professor Bian Zhaoxiang, Associate Vice-President and Director of the Clinical Division of the School of Chinese Medicine, and Professor David Fong, Director of the Research and Development Division of the School of Chinese Medicine, were selected for the National Science and Technology

Programmes Expert Database. They were among the first batch of 56 Hong Kong scholars to be included in the Expert Database.



校長陳新滋教授、副校長（研究及拓展）黃偉國教授、協理副校長暨理學院院長湯濤教授、協理副校長暨中醫藥學院臨床部主任卞兆祥教授、中醫藥學院研究及發展部主任方宏勳教授等五位浸大學者，獲選加入「國家科技計劃專家庫」，成為首批「入庫」的五十六位香港學者之一。

HKBU won the Silver Award in the Public Organisations and Utilities Category at the 2011 Hong Kong Awards for Environmental Excellence. The award was presented to the University in recognition of its outstanding overall performance in environmental excellence and as a testament to its efforts in developing a sustainable low carbon campus.

浸大以卓越的整體環保表現和致力建立低碳校園得到嘉許，在「二零一一香港環保卓越計劃」中獲頒公營機構及公用事業界別的「界別卓越獎」銀獎。



Professor Dominic Lam, Fung Hon Chu Endowed Chair of Humanics of HKBU's Institute of Creativity, won a gold medal at the Olympic Fine Arts Exhibition in London for his work entitled "Millennium Odyssey 2: From the Great Wall to the River Thames – Embrace the World".

浸大創意研究院馮漢柱基金全人教育教授林文傑教授憑他的畫作《千禧奧運之旅II：從長城到泰晤士河—擁抱世界》，獲頒倫敦奧林匹克美術大展金牌。

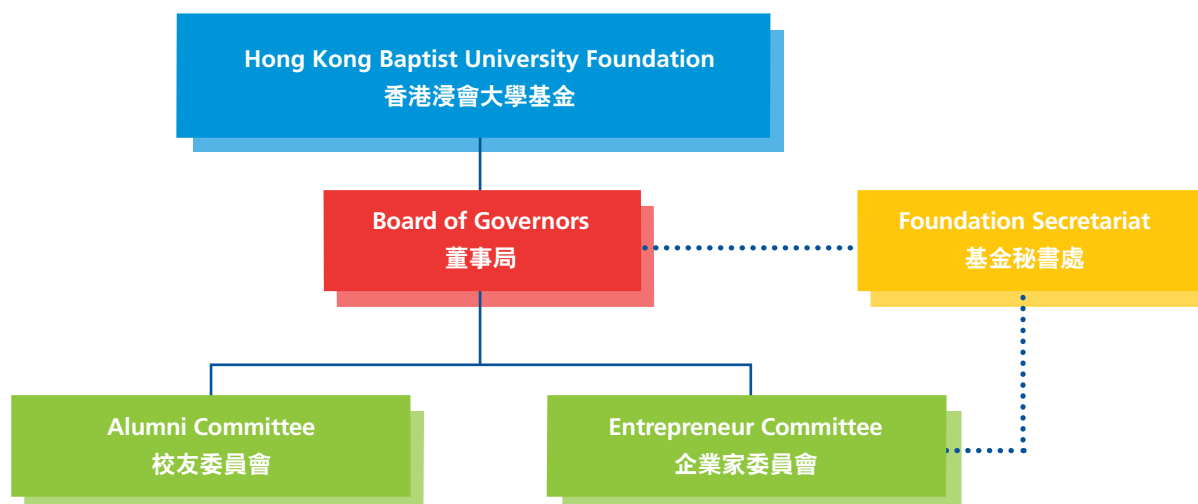
A team of four students from the Faculty of Science and the School of Chinese Medicine won the Silver Project Award in the 2012 International Bio-molecular Design Competition held at Harvard University. Their findings on the use of a magnetic field with self-assembling magnetic nanoparticles to enhance drug delivery in cells demonstrate possible applications of drug delivery in Parkinson's disease or other gene therapy.

浸大一支由理學院及中醫藥學院四位學生組成的隊伍，在美國哈佛大學舉行的「二零一二年國際生物分子設計比賽」中勇奪銀獎。他們成功運用磁場令「磁性藥物」有效輸送到患處的研究成果，有望進一步應用到治療帕金森症或其他基因療法上。



- Introduction to the Foundation  
基金簡介





The Hong Kong Baptist University Foundation was established in early 2009 with a clear mandate to enhance the University's fundraising capabilities and to broaden its support base. The Foundation undertakes to secure funding resources to sustain the University's development in the following spheres:

- To reform the University's academic curriculum in order to meet the demands of the new four-year undergraduate system implemented in 2012;
- To raise the University's research quality and to support interdisciplinary and theme-based research projects;
- To embark on a far-reaching Campus Master Plan to create superlative teaching, learning, and research environments for faculty and students;
- To provide scholarships and bursaries to finance the studies of outstanding students;
- To promote an enhanced international environment on campus and to welcome world-renowned scholars to the University for fruitful and enlightening academic exchange.

Appointed by the University's Council, in conjunction with the President and Vice-Chancellor, the Board of Governors is responsible for the management of the Foundation to ensure that it consistently supports the University's advancement projects. The Foundation has two standing committees, namely the Alumni Committee and the Entrepreneur Committee, which give advice and recommendations to the Board on the formulation of fundraising strategies and the extension of the University's support base.

HKBU has unveiled its 10-year development blueprint *Vision 2020* which states the University's goal of becoming the best regional provider of Whole Person Education. To help the University achieve this ambitious goal, the Foundation has set itself the challenging task of raising at least HK\$100 million annually in support of the various initiatives planned under *Vision 2020*.

為加強籌款力度及拓闊大學的社會網絡，香港浸會大學基金於二零零九年初成立，致力籌募充足的經費資源，協助浸大推進各領域的發展，其中包括：

- 革新課程以配合二零一二年實施的大學四年新學制；
- 提升大學研究水平及支持跨學科和主題研究的項目；
- 展開大規模「校園總體發展規劃」，為師生締造卓越的教研及學習環境；
- 提供學生獎學金及助學金等，資助成績優異的學生順利完成學業；
- 進一步推廣校園國際化，並邀請國際知名學者到大學作學術交流。

基金的運作由浸大校董會聯同校長委任的董事局監管，並以大學的發展為依歸。董事局轄下設有「校友委員會」及「企業家委員會」，負責就制定策略性籌款方案及協助大學拓闊社會網絡方面提供寶貴意見。

浸大已制定《二零二零年願景》十年發展藍圖，矢志成為亞洲區內提供全人教育的最佳學府。香港浸會大學基金亦定下目標，每年籌措最少港幣一億元以支持大學各項發展計劃，俾使實現《二零二零年願景》的教育理想。

## Board of Governors 董事局



### Chairman 主席

Mr. Wilfred Y.W. Wong 王英偉先生,  
SBS, JP

Chairman and Chief Executive Officer,  
Hsin Chong Construction Group Limited

新昌營造集團有限公司主席兼行政總裁

Chairman of the Council and the Court, HKBU

香港浸會大學校董會暨諮議會主席

### Vice-Chairmen 副主席

Dr. Joseph C.T. Lee 李宗德博士, SBS, JP

Chairman, Wofoo Foundation Limited

和富慈善基金有限公司主席

Dr. Ronald Y.C. Lu 呂元祥博士

Chairman, Ronald Lu & Partners (HK) Limited

呂元祥建築師事務所(香港)有限公司主席

Ir Dr. K.K. Wong 王國強博士工程師,  
SBS, JP

Group Chairman & CEO, Kum Shing Group

金城營造集團主席兼行政總裁

### Treasurer 司庫

Mr. William W.C. Leung 梁永祥先生,  
BBS, JP

Chief Executive Officer,  
Sun Hung Kai Financial Limited

新鴻基金金融集團行政總裁

Treasurer of the Council and the Court, HKBU

香港浸會大學校董會暨諮議會司庫

### Secretary-General 秘書長

Professor Frank H.K. Fu 傅浩堅教授,  
MH, JP

Associate Vice-President, HKBU

香港浸會大學協理副校長

## Members 成員

### Mr. Allen T.Y. Chan 陳德源先生

Founding Chairman Emeritus,  
Sino-Forest Corporation  
嘉漢林業國際有限公司榮譽創始主席

### Mr. Anthony K.H. Chan 陳國雄先生

Executive Vice President,  
Kan Hing Plastic Products Factory Limited  
勤興軟膠廠有限公司常務副總裁  
Honorary Member of the Court, HKBU  
香港浸會大學諮議會榮譽委員

### Dr. Cecil S.O. Chan 陳樹安博士

President, Cecil Chan & Associates  
陳樹安博士顧問有限公司主席  
Member of the Court, HKBU  
香港浸會大學諮議會成員

### Mrs. Doreen D.L. Chan 陳許多琳女士

Chief Executive Officer,  
CITIC Bank International  
中信銀行國際行政總裁  
Member of the Council, HKBU  
香港浸會大學校董會成員

### Dr. John C.T. Chan 陳振東博士

Chairman, Chaifa Holdings Limited  
渝振控股集團有限公司主席  
Honorary Member of the Court, HKBU  
香港浸會大學諮議會榮譽委員

### Dr. Moses M.C. Cheng 鄭慕智博士, GBS, OBE, JP

Senior Partner, P. C. Woo & Co.  
胡百全律師事務所首席合夥人

### Professor Alice T.H.W. Chiu 趙曾學韜教授, BBS, JP

Director,  
Henyep Development (Holdings) Limited  
恒興業(集團)有限公司董事

### Dr. Justin K.H. Chiu 趙國雄博士

Executive Director,  
Cheung Kong (Holdings) Limited  
長江實業(集團)有限公司執行董事

### Mr. William C.L. Hui 許晉廉先生

Director & Manager,  
Sze Cheong Investment Company Limited  
士昌置業有限公司董事經理  
Member of the Council, HKBU  
香港浸會大學校董會成員

### Mr. Billy H.C. Hung 孔慶全先生

Director, Wai Tak Land Investment & Loan  
Company Limited  
懷德置業按揭有限公司董事  
Member of the Court, HKBU  
香港浸會大學諮議會成員

### Ms. Cecilia S.W. Lee 李秀慧女士

Partner, Deloitte Touche Tohmatsu  
德勤·關黃陳方會計師行合夥人

### Dr. Eric K.C. Li 李家祥博士, GBS, OBE, JP

Senior Partner, Li, Tang, Chen & Co.  
李湯陳會計師事務所首席會計師  
Honorary Member of the Court, HKBU  
香港浸會大學諮議會榮譽委員

### Mr. Brandon T.C. Liu 劉鐵成先生, JP

Managing Director, Liu Hao Tsing Education  
Foundation Limited  
劉浩清教育基金董事總經理  
Honorary Member of the Court, HKBU  
香港浸會大學諮議會榮譽委員

### Dr. Liu Chak Wan 廖澤雲博士

Chairman,  
Liu's Commerce & Industry Limited  
康澤工商集團董事長  
Honorary Member of the Court, HKBU  
香港浸會大學諮議會榮譽委員

### Mr. David T.Y. Mong 蒙德揚先生

Vice-Chairman, Shun Hing Group  
信興集團副主席  
Member of the Council, HKBU  
香港浸會大學校董會成員

### Dr. Simon S.M. Suen 孫少文博士, JP

Chairman, SML Group Limited  
SML集團主席  
Member of the Court, HKBU  
香港浸會大學諮議會成員

### Dr. David Y.K. Wong 黃友嘉博士, BBS, JP

Managing Director,  
United Overseas Investments Limited  
聯僑遠東有限公司董事總經理  
Member of the Council and the Court, HKBU  
香港浸會大學校董會暨諮議會成員

### Dr. Kennedy Y.H. Wong 黃英豪博士, BBS, JP

Managing Partner,  
Philip K H Wong, Kennedy Y H Wong & Co.  
黃乾亨黃英豪律師事務所首席合夥人  
Chairman of the Council Audit Committee,  
HKBU  
香港浸會大學校董會審計委員會主席

### Mr. Norman P.K. Wu 伍步功先生

Director,  
Wu Yee Sun Charitable Foundation Limited  
伍宜孫慈善基金會有限公司董事

### Dr. Philip P.H. Wu 伍步謙博士, BBS, JP

Director,  
Wu Jieh Yee Charitable Foundation Limited  
伍黎宜慈善基金會有限公司董事  
Member of the Council, HKBU  
香港浸會大學校董會成員

### Mr. Zhang Da Peng 張大朋先生

President, Y. Cee Chemicals Limited  
匯奇化學有限公司董事長  
Member of the Court, HKBU  
香港浸會大學諮議會成員

## Ex-officio Member 當然成員

### Professor Albert S.C. Chan 陳新滋教授, JP

President and Vice-Chancellor, HKBU  
香港浸會大學校長

Term of Governorship: 1 January 2012 to 31 December 2014

任期：2012年1月1日至2014年12月31日

## Entrepreneur Committee 企業家委員會



### Terms of Reference:

- To extend the support base of the University and to accelerate the fundraising activities of the Hong Kong Baptist University Foundation;
- To offer advice on fundraising strategies for the University's development.

### 職權範圍：

- 協助大學拓闊社會網絡，以促進「香港浸會大學基金」的籌募工作；
- 就制定策略性籌款方案，提供寶貴意見。

### Co-Chairmen 聯席主席

#### Dr. John C.T. Chan 陳振東博士

Chairman, Chaifa Holdings Limited  
渝振控股集團有限公司主席

Honorary Member of the Court, HKBU  
香港浸會大學諮議會榮譽委員

#### Ir Dr. K.K. Wong 王國強博士工程師, SBS, JP

Group Chairman & CEO, Kum Shing Group  
金城營造集團主席兼行政總裁

### Members 委員

#### Mrs. Fidelia M.Y. Chan 陳邱敏英女士

Executive Director, Ekpac China Limited  
維昌洋行中國有限公司執行董事

#### Mr. Billy H.C. Hung 孔慶全先生

Director, Wai Tak Land Investment & Loan  
Company Limited

懷德置業按揭有限公司董事

Member of the Court, HKBU

香港浸會大學諮議會成員

#### Mr. Lam Cheung Chuen 林長泉先生

Chairman, Sun Tin Lun Holdings Limited  
新天倫集團有限公司董事長

#### Mr. Peter W.S. Lau 劉永信先生

Managing Director,  
U. R. Label & Printing Company Limited  
香港植富商標印製有限公司董事長

#### Mr. Stanley C.H. Lau 劉展灝先生, BBS, MH, JP

Managing Director,  
Renley Watch Manufacturing Company Limited  
運年錶業有限公司董事總經理

#### Mr. Lee Yuk Fat 李銓發先生

Board Chairman, Volk Favor Food Limited  
民惠食品有限公司董事長

#### Dr. Lee Yuk Lun 李銓麟博士, JP

Chairman & CEO,  
Rising Development Holdings Limited  
麗盛集團控股有限公司主席兼行政總裁

#### Dr. Leung Lun 梁麟博士, MH

Chairman, Lung Cheong International  
Holdings Limited  
龍昌國際控股有限公司主席

**Dr. Liu Hong Fai 廖漢輝博士**

Founder Chairman, The Association of  
Industries and Commerce of Hong Kong  
Southern District Limited  
香港南區工商業聯合總會創會主席

**Dr. Lo Tai Chin 羅台秦博士**

Vice-Chairman,  
W. Haking Enterprises Limited  
寶源基業有限公司副董事長

**Mr. David T.Y. Mong 蒙德揚先生**

Vice-Chairman, Shun Hing Group  
信興集團副主席  
Member of the Council, HKBU  
香港浸會大學校董會成員

**Mr. Roger C.W. Ngan 顏志永先生**

Director of Sales and R&D,  
May Cheong Group  
美昌集團董事 (銷售及研發)  
Honorary Member of the Court, HKBU  
香港浸會大學諮議會榮譽委員

**Mr. Lawrence C. Shum 岑濬先生**

Managing Director,  
New Ocean Energy Holdings Limited  
新海能源集團有限公司董事總經理

**Dr. Simon S.M. Suen 孫少文博士, JP**

Chairman, SML Group Limited  
SML集團主席  
Member of the Court, HKBU  
香港浸會大學諮議會成員

**Mr. Irons W.W. Sze 施榮懷先生, JP**

Executive Director,  
Hang Tung Resources Holding Limited  
恆通資源集團有限公司執行董事  
Honorary Member of the Court, HKBU  
香港浸會大學諮議會榮譽委員

**Ms. Connie W.C. Wong 王惠貞女士, JP**

Managing Director,  
Wong Sun Hing Limited  
王新興有限公司董事總經理

**Dr. David Y.K. Wong 黃友嘉博士,  
BBS, JP**

Managing Director,  
United Overseas Investments Limited  
聯僑遠東有限公司董事總經理  
Member of the Council and the Court, HKBU  
香港浸會大學校董會暨諮議會成員

**Dr. Anthony C.W. Yeung 楊俊偉博士**

Managing Director, Nomura International  
(Hong Kong) Limited  
野村國際 (香港) 有限公司董事總經理兼  
大中華區業務主管  
Honorary Member of the Court, HKBU  
香港浸會大學諮議會榮譽委員

**Ex-officio Members  
當然成員**

**Professor Albert S.C. Chan 陳新滋教授,  
JP**

President and Vice-Chancellor, HKBU  
香港浸會大學校長

**Professor Frank H.K. Fu 傅浩堅教授,  
MH, JP**

Associate Vice-President, HKBU  
香港浸會大學協理副校長

**Mrs. Lily W.L. Chan 陳鄭惠蘭女士**

Director of University Advancement, HKBU  
香港浸會大學發展事務處總監

**Observers  
觀察委員**

**Professor Douglas Robinson  
羅德格教授**

Dean of Arts, HKBU  
香港浸會大學文學院院長

**Professor Stephen Y.L. Cheung  
張仁良教授, BBS, JP**

Dean of Business, HKBU  
香港浸會大學工商管理學院院長

**Professor Lu Aiping 呂愛平教授**

Dean of Chinese Medicine, HKBU  
香港浸會大學中醫藥學院院長

**Professor Huang Yu 黃煜教授**

Acting Dean of Communication, HKBU  
香港浸會大學傳理學院署理院長

**Dr. Simon C.H. Wong 黃志漢博士**

Dean of Continuing Education, HKBU  
香港浸會大學持續教育學院院長

**Professor Tang Tao 湯濤教授**

Associate Vice-President and  
Dean of Science, HKBU  
香港浸會大學協理副校長兼理學院院長

**Professor Adrian Bailey 貝力行教授**

Dean of Social Sciences, HKBU  
香港浸會大學社會科學院院長

**Professor John Aiken 莊藝勤教授**

Director of Academy of Visual Arts, HKBU  
香港浸會大學視覺藝術院總監

**Professor Rick W.K. Wong 黃偉國教授**

Vice-President (Research & Development) and  
Dean of Graduate School, HKBU  
香港浸會大學副校長 (研究及拓展) 兼  
研究院院長

**Secretary  
秘書**

University Advancement Office, HKBU  
香港浸會大學發展事務處

Term of Membership: 1 January 2012 to 31 December 2014

任期：2012年1月1日至2014年12月31日

## Alumni Committee 校友委員會



### Chairman 主席

**Mr. William W.C. Leung 梁永祥先生, BBS, JP**

Chief Executive Officer,  
Sun Hung Kai Financial Limited  
新鴻基金融集團行政總裁

Treasurer of the Council and the Court, HKBU  
香港浸會大學校董會暨諮議會司庫

### Members 委員

**Mr. Allen T.Y. Chan 陳德源先生**

Founding Chairman Emeritus,  
Sino-Forest Corporation  
嘉漢林業國際有限公司榮譽創始主席

**Ms. Delia W.S. Chan 陳維湘女士**

Managing Director,  
Famous Horse Garment Factory Limited  
名駒製衣廠有限公司董事總經理

**Dr. Eddie K.W. Ho 何鏡煒博士**

Chairman, Board of Deacons,  
Kowloon City Baptist Church  
九龍城浸信會執事會主席

**Ms. Angel S.Y. Hon 韓淑儀女士**

Managing Director, PR Network  
公關網絡執行董事

**Mr. Thomas K.H. Hung 洪家恆先生**

General Manager, Easy Groups Limited  
易通集團有限公司總經理

**Mr. Philip S.L. Kan 簡兆麟先生**

Vice-President,  
Hong Kong Baptist University Century Club  
香港浸會大學尚志會副會長

**Mr. Peter W. Kwan 關偉先生**

Senior Teaching Fellow,  
Department of Media and Communications,  
City University of Hong Kong  
香港城市大學媒體與傳播系高級特任講師

**Mr. Lau Pak Shing 劉百成先生**

Managing Director,  
Compass Holdings Limited  
金鉞士控股有限公司董事總經理

**Dr. Gordon L.O. Tsui 徐聯安博士**

Director and Deputy General Manager,  
Hantec Pacific Limited  
亨達集團董事及副總經理

**Mr. Ivan S.K. Wong 王紹基先生**

Director, Kum Shing Group  
金城營造集團董事

**Mr. Sunny H.K. Wong 王克勤先生**

Chief Executive Officer, Greater China,  
Carlsberg Brewery Hong Kong Limited  
嘉士伯啤酒廠香港有限公司大中華區總裁

**Mr. Stephen H.B. Yau 邱浩波先生, BBS, JP**

Chief Executive, International Social Service  
Hong Kong Branch  
香港國際社會服務社行政總裁

**Dr. Royce M.C. Yuen 袁文俊博士, JP**

Senior Director, Lifestyle Federation Limited  
時尚聯盟有限公司高級總監

### Terms of Reference:

- To assist the University in strengthening its links with alumni and to accelerate the fundraising activities of the Hong Kong Baptist University Foundation;
- To set out strategic plans to encourage alumni giving in support of the University's development.

### 職權範圍：

- 協助大學拓闊校友網絡，以促進「香港浸會大學基金」的籌募工作；
- 制定策略性方案，鼓勵校友從多方面回饋母校，以推動大學各領域之發展。

### Ex-officio Members 當然成員

**Mr. Stephen W.O. Tang 鄧永安先生**

Chairman, Mega Pacific Capital Incorporation  
美加百富財資有限公司主席

President, Hong Kong Baptist University Alumni Association  
香港浸會大學校友會會長

Member of the Court, HKBU  
香港浸會大學諮議會成員

**Ms. Marianna W.C. Tsang 曾惠珍女士**

Managing Director,  
TWC Management Limited  
迪德施管理顧問有限公司董事總經理

President,  
Hong Kong Baptist University Century Club  
香港浸會大學尚志會會長

**Professor Frank H.K. Fu 傅浩堅教授, MH, JP**

Associate Vice-President, HKBU  
香港浸會大學協理副校長

**Ms. Melanie W.Y. Lee 李惠儀女士**

Director of Alumni Affairs, HKBU  
香港浸會大學校友事務處總監

**Mrs. Lily W.L. Chan 陳鄭惠蘭女士**

Director of University Advancement, HKBU  
香港浸會大學發展事務處總監

### Secretary 秘書

Alumni Affairs Office, HKBU  
香港浸會大學校友事務處

Term of Membership: 1 January 2012 to 31 December 2014

任期：2012年1月1日至2014年12月31日

## Membership Categories 會員類別

We welcome individuals, corporations and organisations to become members of the Hong Kong Baptist University Foundation. Membership is for life and donations are cumulative. When a member's aggregate donation reaches a predetermined amount, the membership will be upgraded. Details of the categories are listed below:

我們誠邀個人、公司或機構成為香港浸會大學基金的會員，一俟加入即成為永久會員；而會員類別將會按照捐款金額而釐定，並以累積方法計算。當會員捐款累積至某特定金額時，其所屬類別亦因應遞升。有關詳情，請參閱下表：

Membership Categories 會員類別	Donation Amounts 捐款金額
Honorary Permanent President 永遠榮譽主席	HK\$5,000,000 or above或以上
Honorary President 榮譽主席	HK\$1,000,000 – HK\$4,999,999
Honorary Vice-President 榮譽副主席	HK\$500,000 – HK\$999,999
Honorary Director 榮譽會董	HK\$250,000 – HK\$499,999
Director 會董	HK\$150,000 – HK\$249,999
Senior Member 資深會員	HK\$50,000 – HK\$149,999
Sponsoring Member 贊助會員	HK\$20,000 – HK\$49,999



## Membership Roll 基金會員芳名

### Honorary Trustees 永遠榮譽董事

Au Shue Hung Foundation Company Limited  
區樹洪基金有限公司

Cha Foundation  
香港查氏基金會

Ms. Chan Fook Sang Katie  
陳復生女士

Mr. Cheng Wai Ming John  
鄭偉明先生

Dr. Chiu Chun Bong, MBE, JP ▲  
趙振邦博士, MBE, JP

Hang Seng Bank ▲  
恒生銀行

Hong Kong Baptist Church ▲  
香港浸信教會

Mr. Hotung Michael  
何東舜銘先生

Dr. and Mrs. Hung Hin Shiu ▲  
孔憲紹博士伉儷

Hung Hin Shiu Charitable Foundation Limited ▲  
孔憲紹慈善基金有限公司

Mr. Richard Hui and Mr. William Hui ▲  
許晉義、晉廉昆仲

Joyce M. Kuok Foundation & Zheng Ge Ru Foundation  
郭謝碧蓉基金及鄭格如基金

Dr. Ko Siu Shing Patrick  
柯少誠博士

Mr. Koo S.C. Daniel  
古勝祥先生

Kowloon City Baptist Church ▲  
九龍城浸信會

Dr. Liu Chak Wan Sammy  
廖澤雲博士

North Point Baptist Church  
Dr. Andrew Sia  
北角浸信會謝安如博士

Mr. and Mrs. Poon Kei Chak ▲  
潘機澤伉儷

The S.H. Ho Foundation Limited  
何善衡慈善基金會有限公司

Sir Run Run Shaw, CBE  
邵逸夫爵士, CBE

Mrs. So Chau Yim Ping, BBS, JP  
蘇周艷屏女士, BBS, JP

Mr. and Mrs. So Wing Kin ▲  
蘇永乾校友伉儷

Dr. Tin Ka Ping, GBM, MBE ▲  
田家炳博士, GBM, MBE

Wu Jieh Yee Charitable Foundation Limited ▲  
伍潔宜慈善基金有限公司

Wu Yee Sun Charitable Foundation Limited ▲  
伍宜孫慈善基金會有限公司

### Honorary Permanent Presidents 永遠榮譽主席

Mr. Chan Kwok Hung Anthony  
Chairman of Chan Hon Yin Couple Charity Trust  
陳漢賢伉儷慈善信託基金主席  
陳國雄先生

Dr. the Hon. Chan Sui Kau, GBM, GBS, JP ▲  
陳瑞球博士, GBM, GBS, JP

Cheung On Tak Charity Foundation ▲  
張安德慈善基金

CLP Power Hong Kong Limited ▲  
中華電力有限公司

The Croucher Foundation ▲  
裘槎基金會

Mr. Franco Cutrupia and Mrs. Pauline Cutrupia ▲◆  
古楚璧伉儷

David and Dorothy Lam Foundation



“ I am most touched by the community's strong support for the HKBU Foundation, and proud of its efforts made to improve our environment. As Chairman of the Environment and Conservation Fund Committee of the HKSAR Government, I also look forward to our University's contribution to producing leading research and nurturing committed practitioners in the area of environmental protection.

我十分開心香港浸會大學基金成立以來，得到社會人士的大力支持，並在推動環保方面做了大量工作。作為香港特區政府自然保育基金委員會主席，我更加希望浸大可以走在環境保護研究的前列，並為社會培育大量環境保護方面的人才。 ”

Dr. Joseph Lee, SBS, JP Vice-Chairman, Board of Governors, HKBU Foundation  
李宗德博士, SBS, JP 香港浸會大學基金董事局副主席

Drs. Richard Charles and Esther ▲  
Yewpick Lee Charitable Foundation  
利銘澤黃瑤璧慈善基金

Fung (1906) Foundation Limited  
馮氏 (1906) 慈善基金有限公司

Fung Hon Chu Foundation Limited  
馮漢柱慈善基金有限公司

Mr. Fung Sun Kwan  
馮藥均先生

Dr. Hari N. Harilela, GBM, GBS, OBE, JP  
and Mrs. Padma Harilela  
夏利萊博士, GBM, GBS, OBE, JP 及  
夏利萊夫人

Dr. Hung Chao Hong Albert, SBS, JP ▲  
洪祖杭博士, SBS, JP

The Jessie & George Ho Charitable  
Foundation  
何佐芝馮月燕慈善基金

The Kearny Alliance ▲●

Mr. Kwok Ka Hing, Mr. Kwok Ka Sing  
and Mr. Kwok Ka Ching  
Kwok Chung Bo Fun Charitable Fund ▲  
郭鍾寶芬慈善基金  
郭家慶先生、郭家聲先生及郭家政先生

Mr. and Mrs. Lau Chor Tak ▲  
劉佐德伉儷

Lee Shau Kee Foundation Limited ▲  
李兆基基金有限公司

Liu Hao Tsing Education Foundation  
劉浩清教育基金

Dr. Lo H.S. Vincent, GBS, JP  
羅康瑞博士, GBS, JP

Pecan Foundation Limited ▲  
眾富基金會有限公司

Shun Hing Education and  
Charity Fund Limited ▲  
信興教育及慈善基金有限公司

Dr. Andrew Sia  
謝安如博士

Sino-Forest Corporation  
嘉漢林業國際有限公司

The Starr Foundation

Dr. Simon Suen, JP and Mrs. Mary Suen ▲  
孫少文博士, JP 及夫人孫蔡吐媚女士

Mr. Ivis Sze  
施榮怡先生

Tsang Shiu Tim Charitable Foundation ▲  
曾肇添慈善基金

Wofoo Foundation Limited ▲  
和富慈善基金有限公司

Ir Dr. K.K. Wong, SBS, JP  
Group Chairman & CEO of  
Kum Shing Group ▲  
金城營造集團集團主席暨行政總裁  
王國強博士工程師, SBS, JP

Dr. Kennedy Y.H. Wong, BBS, JP ▲  
黃英豪博士, BBS, JP

Alumnus Wu Po Kung,  
Member of Century Club ▲  
尚志會會員伍步功校友

Yue Hwa Chinese Products Emporium  
Limited ▲  
裕華國產百貨有限公司

Mr. Zhang Da Peng ▲  
張大朋先生

## Honorary Presidents 榮譽主席

Amway Hong Kong Limited ▲  
美國安利 (香港) 日用品有限公司

BOCHK Charitable Foundation ▲  
中銀香港慈善基金

Dr. Chan Chun Tung John ▲  
陳振東博士

Dr. Chan Shu On Cecil  
陳樹安博士

Professor Albert S.C. Chan, JP ▲  
陳新滋教授, JP

Mr. Chan Tak Yuen Allen  
陳德源先生

Ms. Chan Wai Sheung Delia ▲  
陳維湘女士

▲ With donation made in the past year  
曾於過去一年捐資

◆ With membership level upgraded in the past year  
曾於過去一年晉升會員級別

● New Member  
新會員

“ I truly believe in the all-rounded holistic education of HKBU. There are many people who also share the same view and who have donated substantially to enable the University to continue with its vision of educating leaders of tomorrow. I take this opportunity to thank them dearly for their support.

我篤信香港浸會大學奉行的全人教育精神。不少社會人士與我的信念一致，他們更慷慨捐資，讓大學能夠貫徹理念，為未來社會培育領袖人才。謹此機會，衷心感謝他們的寶貴支持。 ”

Dr. Ronald Lu, Vice-Chairman, Board of Governors, HKBU Foundation  
呂元祥博士 香港浸會大學基金董事局副主席



Dr. Chan Yau Hing Robin, GBS, JP  
陳有慶博士, GBS, JP

Mrs. Chan Yau Man Ying Fidelia ▲●  
陳邱敏英女士

Mr. Cheung Ka Lung Tom ▲  
張家龍先生

Chi Tao Charitable Foundation Limited ▲  
智韜慈善基金有限公司

Chinese Christian Universities Alumni  
Association H.K. ▲  
全國基督教大學同學會

The Chinese General Chamber of  
Commerce ▲  
香港中華總商會

The Chinese Manufacturers'  
Association of Hong Kong ▲  
香港中華廠商聯合會

Dr. Chiu Kwok Hung Justin ▲  
趙國雄博士

Mr. and Mrs. Stanley Y.L. Chu  
朱裕倫伉儷

Eu Yan Sang (Hong Kong) Limited ▲  
余仁生(香港)有限公司

ExxonMobil Hong Kong Limited ▲  
埃克森能源有限公司

Dr. Fang Hung Kenneth, GBS, JP ▲  
方鏗博士, GBS, JP

Dr. Stanley Ho, GBM, GBS, OBE  
何鴻燊博士, GBM, GBS, OBE

Hong Kong Economic Journal Company  
Limited  
信報財經新聞有限公司

Hong Kong Federation of Women  
香港各界婦女聯合協進會

Dr. Gilbert Wan Hoi Hung  
Chairman of Ideal Group Worldwide Limited ▲  
理想集團環宇有限公司主席  
熊宏海博士

Mr. Ip Sze Kit Alex ▲  
葉仕傑先生

The Italian Cultural Society of Hong Kong -  
Leo Tung-hai Lee Scholarship Fund  
香港意大利文化協會 - 李東海獎學金

Kwan Fong Charitable Foundation  
群芳慈善基金會

Mr. and Mrs. Allan Kwong ▲  
鄭慶泉伉儷

Mr. and Mrs. Lam Cheung Chuen ▲  
林長泉伉儷

Mr. Frank Lau  
劉英華先生

Mr. Lau Pak Shing ▲  
劉百成先生

Mr. Lau Tak Wan Herman  
劉得還先生

Mr. Lee Dao Bon Barton  
李道邦先生

Dr. Lee Shiu  
李韶博士

Mr. Lee Yu Leung  
Chairman of China Fortune  
Foundation Limited  
中國富強基金會主席李如樑先生

Mr. Lee Yu Leung  
Chairman of China-India Fortune  
Foundation Limited  
中印富強基金會主席李如樑先生

Li Po Chun Charitable Trust Fund ▲  
李寶椿慈善信託基金

Life Devotee Limited (Alumnus Edward Li)  
修明學會有限公司(李居明校友)

Mr. Lok Chi Hung ▲◆  
駱志鴻先生

Dr. Ronald Lu and Mrs. Stella Lu ▲  
呂元祥博士及夫人呂楊俊婷女士

Luen Thai International Group Limited  
聯泰國際集團有限公司

Lui Ming Choi Foundation  
呂明才基金會

Providence Foundation Limited ▲  
悟宿基金會有限公司

Mr. Shang Tat Yan Dickson ▲  
尚達人先生

Ms. Song Yakun  
宋亞坤女士

Tsim Sha Tsui District Kai Fong  
Welfare Association  
尖沙咀街坊福利會



“ The HKBU Foundation is now in its 4<sup>th</sup> year of operation. I am deeply honoured to be able to work hand-in-hand with the members of the Board of Governors and the Entrepreneur Committee to contribute in multiple ways to the University's development. I am extremely grateful for the valuable donations and support that have come from all fronts, which is a tremendous source of encouragement to the University. I sincerely hope that the HKBU Foundation will continue to flourish, recruiting more passionate individuals to our family to work together on the provision of quality whole person education for the community. ”

香港浸會大學基金成立至今已近四年，非常榮幸能與各董事局及企業家委員會成員攜手並肩，為浸大各方面的發展作出貢獻。得到各方面的寶貴捐獻和支持，實在讓我萬分欣喜，對浸大亦是莫大的鼓舞。衷心期盼香港浸會大學基金茁壯成長，推動更多有心人加入我們的大家庭，共同為香港提供更優質的全人教育。 ”

Ir Dr. K.K. Wong, SBS, JP Vice-Chairman, Board of Governors and Co-Chairman,  
Entrepreneur Committee, HKBU Foundation  
王國強博士 工程師, SBS, JP 香港浸會大學基金董事局副主席兼企業家委員會聯席主席

Utahloy Charitable Foundation  
裕達隆慈善基金

Victor and William Fung Foundation  
Limited ▲●  
經綸慈善基金有限公司

Mr. Wong Nga Chung ▲  
黃雅忠先生

Dr. Wong Po Yan, GBM, JP  
黃保欣博士, GBM, JP

Ms. Wong Wai Ching Connie, JP ▲●  
王惠貞女士, JP

Mr. Wilfred Y.W. Wong, SBS, JP ▲  
王英偉先生, SBS, JP

Dr. Woo Wing Fai Vincent, BBS  
胡永輝博士, BBS

Dr. Wu Po Ko Michael  
伍步高博士

Dr. Howard Yeung  
楊永明醫生

Mr. Zhu Gong Shan  
GCL-Poly Energy Holdings Limited ▲  
保利協鑫能源控股有限公司朱共山先生

## Honorary Vice-Presidents 榮譽副主席

Bio-Gene Technology Limited  
伯齊科技有限公司

Mr. Chan Yu Ling Abraham ▲  
陳宇齡先生

Chung Yeh Educational Organization  
Company Limited ▲  
中業教育機構有限公司

Professor Frank H. Fu, MH, JP ▲◆  
傅浩堅教授, MH, JP

Hoi Bun School  
海濱學校

Hong Kong Baptist University  
Century Club ▲  
香港浸會大學尚志會

Hong Kong Chiu Chow Chamber of  
Commerce Limited ▲  
香港潮州商會

K. S. Lo Foundation ▲  
羅桂祥基金

Lam Kin Chung Morning Sun  
Charity Fund  
林健忠曉陽慈善基金會

Langham Foundation Limited ▲  
靈風基金

Mr. Leung Wing Cheung William, BBS, JP  
and Mrs. Leung Ho Wai Ling Agnes ▲  
梁永祥先生, BBS, JP及夫人梁何惠玲女士

The Lily Chiang Charitable Foundation  
Limited  
蔣麗莉海闊天空慈善基金

University Baptist Church ▲  
大學浸信會

Vigconic (International) Limited  
維康力(國際)有限公司

Mr. Wong Him Yue  
王兼裕先生

Mr. Yue Yun Hing, BBS, MH  
余潤興先生, BBS, MH

## Honorary Directors 榮譽會董

American Baptist Mission ●  
香港美浸信會

The Baptist Convention of Hong Kong ▲  
香港浸信會聯會

Mr. Chan Chun Hung Frederick  
陳鎮雄先生

Mr. Chan Shu Nam  
陳樹楠先生

Mr. William Chan, BBS, JP ▲●  
陳榮濂先生, BBS, JP

Ching Wah College of TCM  
菁華中醫學院

Professor Chow Chuen Ho Larry  
周全浩教授

Professor Chow Kai Wing ▲●  
周佳榮教授

▲ With donation made in the past year  
曾於過去一年捐資

◆ With membership level upgraded in the past year  
曾於過去一年晉升會員級別

● New Member  
新會員

“ I am a strong believer of reciprocity, meaning if I treat people well, they will return the same favour. Yet, treating people well is just like an investment. Sometimes you earn good return, and sometimes you receive nothing. As Chairman of the Alumni Committee, my strategy is to look after our undergraduates and alumni well so that their bonds with their Alma Mater will be long lasting.

我深信依存互惠互利的道理，只要好好待人，別人自會以誠相待。不過這種做法猶如投資，有時回報豐厚，有時一無所得。我身為校友委員會主席，自當悉心關顧浸大的同學與校友，讓他們與母校的情誼恆久長存。 ”

Mr. William Leung, BBS, JP Treasurer, Board of Governors and  
Chairman, Alumni Committee, HKBU Foundation  
梁永祥先生, BBS, JP 香港浸會大學基金董事局司庫兼校友委員會主席



CWM / Nethersole Fund  
世界傳道會 / 那打素基金

Ms. Ho Pak Ching Loretta  
何柏貞女士

Mr. Hu Shao Ming Herman, BBS, JP  
胡曉明先生, BBS, JP

Hung On To Memorial Fund Limited  
孔安道紀念金有限公司

Rev. Dr. Ip King Tak ▲  
葉敬德博士

Karrie International Holdings Limited  
嘉利國際控股有限公司

Kowloon Chamber of Commerce ▲  
九龍總商會

Kowloon International Baptist Church ▲  
九龍國際浸信會

Lai Sing Medicine Factory Limited  
黎昇中藥廠有限公司

Ms. Lam Kwan Linda ▲●  
林群女士

Mr. Arthur C.F. Lau  
劉聚富先生

Dr. Eric K.C. Li, GBS, OBE, JP ▲  
李家祥博士, GBS, OBE, JP

Mr. Lo Wai Sang Daniel ▲  
盧偉生先生

Mr. Shuen Pak Chin Alex ▲◆  
孫百千先生

Mr. Siu Che Kit Wallace  
蕭志傑先生

Dr. Tam Wah Ching  
譚華正博士

Mr. Tang Kwai Chang Alfred ▲  
鄧貴彰先生

Mr. Tang Yuen Nien  
湯延年先生

Dr. Jacinto Tong Man Leung ▲●  
湯文亮博士

Mr. Wong Hak Kun Sunny ▲◆  
王克勤先生

Mr. Wong Ting Chung, BBS  
王庭聰先生, BBS

Ms. Woo Kit Yu Kitty ▲◆  
胡潔儀女士

Mr. Yip Sing Kit  
葉勝傑先生

Mr. Gabriel C.M. Yu  
余志明先生

## Directors 會董

AIA Foundation ▲  
友邦慈善基金

Apple Daily Charitable Foundation ▲  
蘋果日報慈善基金

Chevron Hong Kong Limited  
雪佛龍香港有限公司

Chinese Christian Universities Alumni  
Association Education Foundation ▲◆  
全國基督教大學同學會教育基金

Dr. Choi Kwok Chan  
蔡國贊博士

Mr. Chow Chuen Yeung Alex ▲  
周全洋先生

Chun Wo Development Holdings  
Limited  
俊和發展集團有限公司

Dr. Eddie K.W. Ho ▲  
何鏡煒博士

Hong Kong & Macau Taiwanese Charity  
Fund Limited  
港澳台灣同鄉慈善基金會

Mr. Hui Chun Fui Victor, GBS, MBE, JP  
許晉奎先生, GBS, MBE, JP

Mr. Kwai Tak Lun Kelvin  
季德燐先生

Professor Lam Kit Chun  
林潔珍教授

Mr. Lau Kwok Ming Samuel ▲  
劉國明先生

Mr. Peter W.S. Lau ▲●  
劉永信先生

Professor Lee Wai Ming Albert ▲  
李慧明教授



“ In the early years when I first joined the HKBU Foundation, the University had little contact with the commercial and industrial sectors. The outside world knew HKBU only through its School of Communication. Today, four years later, HKBU is working closely with the business and industrial sectors and has enlisted many eminent entrepreneurs to join our advisory team and even render us financial support. Also, the School of Chinese Medicine has repeatedly made the headlines in Hong Kong and become the pride of the University.

本人剛加入香港浸會大學基金時，浸大跟工商界接觸並不緊密，外間對浸大的主要印象只有透過傳理學院而已。但四年後的今天，浸大已廣泛與工商界合作，更邀請了不少工商界翹楚加盟，出資出力，中醫藥學院更在香港打出名堂，為浸大爭光。 ”

Dr. John Chan, Co-Chairman, Entrepreneur Committee, HKBU Foundation  
陳振東博士 香港浸會大學基金企業家委員會聯席主席

Dr. Liao Sheung Kwan Peter  
廖湘琨博士

Mr. Luk Siu Keung Rommel ▲  
陸兆強先生

Pak Shing Tong Group ▲  
百成堂集團

Sheen Hok Charitable Foundation  
善學慈善基金

Shenyin Wanguo Futures (H.K.)  
Limited ▲◆  
申銀萬國期貨(香港)有限公司

Si Yuan Foundation  
思源基金會

Stone of Help Limited ▲  
以便以謝基金有限公司

The Talented Dragon Investment  
Limited  
華材投資有限公司

Mr. Wong Chung Ying  
黃頌盈先生

## Senior Members 資深會員

Ageas Insurance Company (Asia)  
Limited  
富通保險(亞洲)有限公司

An Hsin Construction Company  
Limited ▲  
安迅建築有限公司

Annette & Gerd Schwandner  
Foundation for Science and Culture ▲

Asia One Communications Group ▲  
宏亞傳訊集團

Asia Television Limited ▲  
亞洲電視有限公司

Mr. Au Po Choi  
歐寶材先生

Baring Asset Management (Asia)  
Limited ▲◆  
霸菱資產管理(亞洲)有限公司

Professor Antonio Barreira  
曹東尼教授

Dr. Chan Lo Kit Sheung Karen ▲  
陳羅潔湘博士

Che Scientific Company (Hong Kong)  
Limited  
香港科學儀器社有限公司

Mr. Chen Man Lung  
陳文龍先生

Mr. Walter S.W. Cheung  
張樹槐先生

Mr. Chia Kok Onn  
謝國安先生

Ir Chiu Wing Kwong Joseph  
趙榮光工程師

Mr. Chui Pik Fai ▲  
徐壁輝先生

Dr. Chui Shiu Hon  
崔紹漢博士

Emperor Foundation Limited ▲  
英皇慈善基金會

Epson Foundation  
愛普生基金會

Mr. Fung Man Sang ▲  
馮民生先生

Haitong International Securities Group  
Limited ▲◆  
海通國際證券集團有限公司

Ms. Ho Oi Ling  
何靄玲女士

Ms. Ho Shui Chun Janus  
何瑞珍女士

Professor Clara W.C. Ho and  
Dr. Ho Koon Piu  
劉詠聰教授及何冠彪博士

Hong Kong Baptist Hospital ▲  
香港浸信會醫院

Hong Kong Institute of Certified Public  
Accountants ▲  
香港會計師公會

▲ With donation made in the past year  
曾於過去一年捐資

◆ With membership level upgraded in the past year  
曾於過去一年晉升會員級別

● New Member  
新會員

“ The University is always exploring and identifying the availability of additional resources for us to develop and implement many strategic plans that are not funded by the UGC and the HKSAR Government. Your generous and unfailing support for the University has enabled us to grow during the past two decades since we became a University. On behalf of the students who benefitted from your generosity, I would like to express our heartfelt thanks to you all again.

浸大不斷尋求及開拓各種額外的資源，支持大學發展及實踐各項策略性計劃，而這些計劃並沒有受到大學教育資助委員會及香港特區政府所資助。全賴您們長期以來的鼎力支持，讓浸大自升格為大學的近二十年來，不斷成長。謹代表受惠的莘莘學子，一再衷心感謝您們的支持。”

Professor Frank Fu, MH, JP Secretary-General, Board of Governors, HKBU Foundation  
傅浩堅教授，MH，JP 香港浸會大學基金董事局秘書長



Hong Kong Mathematical Society  
香港數學學會

Mr. Hung Hin Hong  
孔憲康先生

Mr. Hung Hing Chuen Billy ▲  
孔慶全先生

In Express Recreation Management  
Limited ▲◆  
凌速體運管理有限公司

Mr. Lu Chong Chi George  
姚仲池先生

Janssen Pharmaceutica

The Jardine Engineering Corporation  
Limited ▲●  
怡和機器有限公司

Dr. Philip C.K. Kwok, SBS, JP  
郭志權博士, SBS, JP

Mrs. Lam Chow Yat Nok Pamela  
林周一諾女士

Mr. Gordon Lee ▲◆  
李志文先生

Mr. Lee Ping Kwan Gordon  
李炳坤先生

Dr. Lee Sam Yuen John, BBS  
李三元博士, BBS

Professor Leung Mee Lee  
梁美莉教授

Mr. Liu Hung Derek ▲  
廖鴻先生

Dr. Liu Lit Mo, MBE, JP  
廖烈武博士, MBE, JP

Professor Liu Pak Wai, SBS, JP  
廖柏偉教授, SBS, JP

Mr. Lo Kwok Hung  
勞國雄先生

Dr. Luk Ho Wai Mei Vivienne  
陸何慧薇博士

Mr. Lynn Kwok Wah Frederick  
林國華先生

Mongkok Baptist Church ▲  
旺角浸信會

Mr. Ng Chi Wah  
吳志華先生

Professor Ng Ching Fai, GBS and  
Mrs. Ng Kwok Shuk Wah Angeline  
吳清輝教授, GBS及夫人吳郭蜀華女士

POAD Group Limited

Ms. Sin Wai Han Catalles ▲  
單慧嫻女士

SITA Waste Services Limited ▲◆  
昇達廢料處理有限公司

Ms. Siu Po Kwan Gertrude ▲  
蕭寶君女士

Professor Siu Wai Sum  
蕭偉森教授

Stewards Limited  
香港神託會

Tai Po Baptist Church ▲  
大埔浸信會

Ms. Tam Suk Han Winnie  
譚淑嫻女士

Truth Cornerstone Baptist Church  
真理基石浸信會

Ms. Tsang Wai Chun Marianna ▲◆  
曾惠珍女士

Mr. James S. Tsien  
錢乃駿先生

Mr. Wan Chi Tin  
尹志田先生

Winsor Health Products Limited  
百草堂有限公司

Mr. Wong Chun Fai  
黃鎮暉先生

Ms. Wong Lai Shan Lisa ▲◆  
黃麗珊女士

Ms. Wong May Wai Esther ▲  
黃美慧女士

Professor Wong Yin Lee  
黃嫣梨教授

Mr. Wu Tak Lung Bernard ▲  
吳德龍先生

Dr. Mildred S.M. Yang  
楊斯敏博士

Ms. Yip Souk Chanh Jennie  
葉淑真女士

Dr. Yip Wai Hong, BBS, MH ▲  
葉惠康博士, BBS, MH

Young Chi Wan Foundation Limited  
楊志雲慈善基金有限公司

Dr. Young Kwok Hung Clement  
楊國雄博士

Professor Yu Chau Leung Edwin ▲  
余秋良教授

Mr. Yue Kwok Leung Tony, MH, JP  
余國樑先生, MH, JP

## Sponsoring Members 贊助會員

Asia Financial Group  
亞洲金融集團

Mr. Au Weng Hei William, BBS, JP  
區永熙先生, BBS, JP

Professor Chan Ka Wah Kara ▲  
陳家華教授

Ms. Chan Lee Fong Savanna ▲  
陳莉芳女士

Ms. Chan Man Yin ▲  
陳敏賢女士

Ms. Chan Oi Ching  
陳愛菁女士

Ms. Chan Siu Kuen Kathy ●▲  
陳少娟女士

Mr. Chang Pin Benjamin  
張斌先生

- Mr. Cheng Sing Yip ▲  
鄭成業先生
- Mr. Cheng Yan Kee, JP ▲  
鄭恩基先生, JP
- Mr. Cheuk Wing Chuen ▲  
卓永椿先生
- Mr. Cheung Chiu Kwong Henry and  
Mrs. Cheung Tse Hor Ling Gloria  
張朝光先生及張謝賀齡女士
- Dr. Cho Hee Chuen Paul  
曹希銓博士
- Mr. Choi Ngai Min Michael, JP  
蔡涯棉先生, JP
- Mr. Chu Lai Chuen ▲●  
朱禮全先生
- Mr. Chu Wai Kee Kenneth  
朱偉基先生
- CPA Australia - Hong Kong China  
Division ▲  
澳洲會計師公會香港分會
- Mr. Fan Kam Ping John, BBS, JP ▲●  
范錦平先生, BBS, JP
- Professor Fan Yiu Kwan, BBS, JP  
范耀鈞教授, BBS, JP
- Ms. Ho Man Fung Edith  
何文鳳女士
- Professor Ho Shun Man Simon ▲  
何順文教授
- Mr. Ho Siu Lam  
何兆霖先生
- Ms. Ho Wing Yin Winnie ▲  
何詠妍女士
- Mr. Hong Lok Keung Anthony ▲●  
康樂強先生
- KIEHL'S Since 1851
- Dr. Lai Man Philip (Nagar)  
黎民博士
- Mr. Lau Tung Hoi  
劉東海先生
- Dr. Lau Wah Sum, GBS, OBE, JP ▲  
劉華森博士, GBS, OBE, JP
- Ms. Grace Lee  
李從美女士
- Mr. Lee Tin Sung Eric  
利天送先生
- Mr. Leung Chung Sing Sammy  
梁松聲先生
- Ms. Leung Wing Mui Liza  
梁詠梅女士
- Mr. Li Chun Yin Brian ▲●  
李俊諺先生
- Dr. Lo Kam Shing  
勞錦城博士
- Mr. Luk Sai Wai Simon ▲●  
陸世煒先生
- Dr. Mok Man Hung  
莫民雄博士
- Mr. Ng Chi Ho Mikron  
吳志豪先生
- Dr. Ng Tai Wo  
吳太和博士
- Ms. Ngai Yiu Chi  
倪耀芝女士
- Mr. Ngan Chi Wing Roger  
顏志永先生
- Shum Shui Po Baptist Church ▲  
深水埗浸信會
- Dr. Siu Fook Yee Man Noel ▲  
蕭霍綺文博士
- Ir Siu Man Po, MH  
蕭文波工程師, MH
- Mr. Sy Chun Bun  
施俊斌先生
- Professor Tang Tao ▲  
湯濤教授
- Mr. Tin Fung  
田豐先生
- Ms. Tong Yuen Ching Winnie ▲  
唐婉貞女士
- Mr. Tsang Hon Ming ▲  
曾漢明先生
- Mrs. Tsien Wong Bik Kwan Teresa ▲●  
錢黃碧君女士
- Mr. Tsui Kwok Yue Kent  
徐國榆先生
- Ms. Wong Lai Chun Agnes ▲●  
王麗珍女士
- Mr. Wong Wai Fung Anthony ▲  
黃維豐先生
- Yan Lee Construction Company Limited  
仁利建築有限公司
- Dr. Andrew Y.Y. Yeung  
楊裕恩博士
- Professor Yip Siu Han Terry ▲  
葉少嫻教授
- Mr. Yip Yun Kuen and  
Ms. Chan Pik Ha
- Mr. Yiu Yu Ho Thomas  
姚汝豪先生
- Dr. Yue Kin Man Kevin ▲  
余堅文博士

As at 31 December 2012  
截至2012年12月31日

- ▲ With donation made in the past year  
曾於過去一年捐資
- ◆ With membership level upgraded in the past year  
曾於過去一年晉升會員級別
- New Member  
新會員

▪ Foundation Activities  
基金活動



### ▼ 9/1/2012

The Hong Kong Tsuen Wan Industries and Commerce Association cum China-Hong Kong Entrepreneur Association paid a visit to HKBU.

香港荃灣工商業聯合會暨中港企業家協會代表團到訪浸大。



### ▼ 5/2/2012

HKBU held its annual Gala Concert featuring renowned violinist Mr. Huang Mengla and the HKBU Symphony Orchestra. The concert was sponsored by Mr. and Mrs. Zhang Da Peng.

大學舉行周年音樂會，邀得著名小提琴家黃蒙拉先生與浸大交響樂團攜手演出——音樂會由張大朋伉儷贊助。



### ▶▶ 8/2/2012

The Hong Kong Baptist University Foundation held a Thanksgiving Reception to express the University's appreciation to Foundation members and to celebrate the 3<sup>rd</sup> anniversary of the Foundation.

香港浸會大學基金舉行感恩茶聚，向各基金會會員致謝，並誌慶基金成立三周年。



### ▶▶ 22/2/2012 & 12/11/2012

Alumni Sharing Forums themed "Disciplinary Force – My Cup of Tea?" and "Back to China – Get Ready!" were organised to enable students to benefit from the professional experiences and success stories of distinguished alumni.

大學舉辦「校友分享會」，分別以「紀律部隊——是否我杯茶？」及「北望神州，整裝待發！」為題，讓同學從傑出校友的工作經驗及成功故事中獲得啟發。



▼ 9/3/2012

The Hong Kong Young Industrialists Council paid a visit to HKBU.

香港青年工業家協會代表團到訪浸大。



▼ 22/3/2012

The Federation of Hong Kong Guangdong Community Organisations paid a visit to HKBU.

香港廣東社團總會代表團到訪浸大。



▶▼ 23/3/2012

Hong Kong Baptist University Foundation Certificates were presented to the Honorary Permanent Presidents and Honorary Presidents at the Founders' Day Reception in appreciation of their generous support.

在校慶酒會上，香港浸會大學基金頒贈證書予多位永遠榮譽主席及榮譽主席，以答謝他們對浸大的慷慨支持。



▼ 24/4/2012

A Scholarship and Bursary Donors' Tea Reception was held.

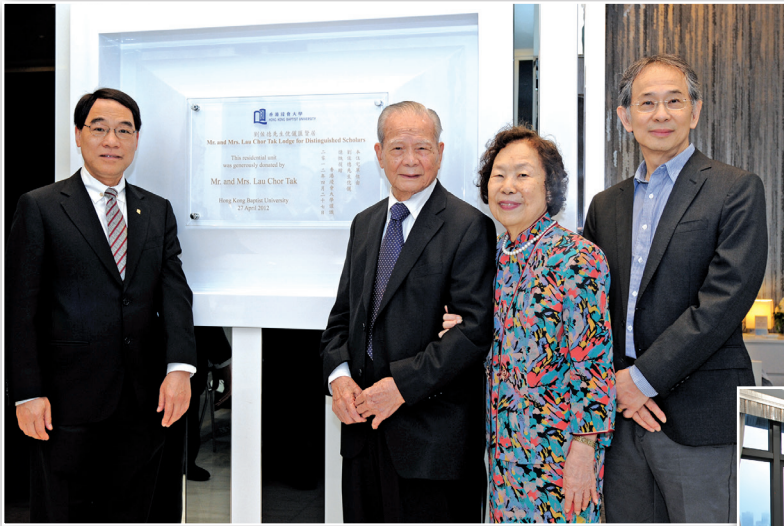
大學舉行獎助學金捐贈者答謝茶會。



▲ 27/4/2012

The Award Presentation Ceremony of the 9<sup>th</sup> Global Chinese Universities Student Film and Television Festival was held. The Festival was organised by the Academy of Film and sponsored by Simon Suen Foundation Limited.

第九屆全球華語大學生影視獎頒獎典禮——活動由電影學院主辦及孫少文基金有限公司贊助。



◀ 27/4/2012

The Opening Ceremony of Mr. and Mrs. Lau Chor Tak Lodge for Distinguished Scholars was held. The residential unit was donated by Mr. and Mrs. Lau Chor Tak to accommodate visiting world-class scholars and distinguished laureates.

劉佐德先生伉儷匯賢居啟用儀式—大學獲劉佐德伉儷捐贈此住宅單位，用以款待世界級學者和桂冠訪問學人。



▶ 30/4/2012

The Award Presentation Ceremony cum Award Winners' Lecture of The First Cheung On Tak International Award for Outstanding Contribution to Chinese Medicine was held. The first of its kind in Hong Kong, the award was established with a donation from the Cheung On Tak Charity Foundation.

第一屆張安德中醫藥國際貢獻獎頒獎典禮暨得獎學人講座—此獎項為本港首創，由張安德慈善基金捐資設立。



▼ 8/5/2012

A donation of HK\$5 million by Mr. Franco Cutrupia, President of C.N.T. Limited and Alumna Mrs. Pauline Wei Cutrupia, Managing Director of C.N.T. Limited, was designated for the establishment of the Mr. and Mrs. Franco Cutrupia Mainland Students Scholarship.

C.N.T. Limited總裁古楚璧先生及總經理魏昭鳳校友捐資港幣五百萬元，用以成立「古楚璧伉儷內地生獎學金」。

▼ 11/5/2012

Hong Kong Commerce and Industry Association Limited paid a visit to HKBU.

全港各區工商聯代表團到訪浸大。





### ◀ 16/5/2012

The Conferment Ceremony of Dr. Kennedy Y.H. Wong Endowed Chair of Chinese Medicine cum Inaugural Lecture by Professor Lu Aiping, Dean and Founding Endowed Chair of Chinese Medicine was held. The Endowed Chair was established with a donation from Dr. Kennedy Wong, BBS, JP.

黃英豪博士中醫藥講座教授銜頒授典禮暨中醫藥學院院長及奠基講座教授呂愛平教授就職講座——講座教授席由黃英豪博士，BBS，JP捐資設立。



### ▲ 17/05/2012

A donation of HK\$2 million by Dr. the Hon. Chan Sui Kau, GBM, GBS, JP, Executive Chairman of YangtzeKiang Garment Manufacturing Company Limited, was made in support of the Hong Kong History Project of the Advanced Institute for Contemporary China Studies. Mr. Yu Kwok Chun, GBS, JP, Chairman and Managing Director of Yue Hwa Chinese Products Emporium Limited, and Mr. Kenneth Fang, GBS, JP, Chairman of Fang Brothers Knitting Limited, also donated HK\$500,000 respectively to the project.

長江製衣廠有限公司董事會主席陳瑞球博士，GBM，GBS，JP捐資港幣二百萬元，資助當代中國研究所領導的《香港通史》出版計劃。裕華國產百貨有限公司董事長總經理余國春先生，GBS，SBS，JP及肇豐針織有限公司董事長方鏗先生，GBS，JP亦分別捐資港幣五十萬元支持是項計劃。



### ▲ 19/6/2012

A donation of HK\$2 million by Chi Tao Charitable Foundation Limited was made to support the School of Chinese Medicine Development Fund.

智韜慈善基金有限公司捐資港幣二百萬元，用以支持中醫藥學院發展基金。



### ▲ 21/6/2012

The Federation of Hong Kong Industries paid a visit to HKBU. 香港工業總會代表團到訪浸大。

### ◀ 5/7/2012

A cumulative donation of HK\$2.6 million has been made by Amway Hong Kong Limited since 2007 in support of the green and organic projects of the Hong Kong Organic Resource Centre. 美國安利(香港)日用品有限公司自二零零七年起，累積捐資港幣二百六十萬元，資助香港有機資源中心舉辦綠色推廣活動。



### ▼ 10/7/2012

The "HKBU Hostel Donation Campaign" was launched to solicit support from alumni.

大學推出「浸大學生宿舍捐助計劃」向校友募捐。



### ▼ 18/7/2012

The Association of Industries and Commerce of Hong Kong Southern District Limited paid a visit to HKBU.

香港南區工商業聯合總會代表團到訪浸大。



### ▲ 12/9/2012

The Opening Ceremony of the Exhibition of Mr. Cheung On Tak's Collection was held. The University received a collection of antiques and craftworks from Mr. Cheung On Tak, Founder of Cheung On Tak Charity Foundation, for exhibition and auction in support of the Cheung On Tak International Award for Outstanding Contribution to Chinese Medicine.

張安德先生珍藏展開幕典禮——大學獲張安德慈善基金創辦人張安德先生捐贈一批珍貴古董及工藝收藏品作展覽及拍賣之用，拍賣收益將撥捐「張安德中醫藥國際貢獻獎」。



### ◀ 3/10/2012

*Scent of Heaven* by Shanghai author Ms. Wang An Yi was awarded the grand prize of the 4<sup>th</sup> Dream of the Red Chamber Award: The World's Distinguished Novel in Chinese. The award was established with a donation from Mr. Zhang Da Peng.

上海作家王安憶女士憑《天香》奪得第四屆「紅樓夢獎：世界華文長篇小說獎」首獎——獎項由張大朋先生捐資設立。



### ◀ 10/10/2012

A donation of HK\$5 million by Ms. Connie Wong, JP, Managing Director of Wong Sun Hing Limited, was made in support of the Hong Kong History Project of the Advanced Institute for Contemporary China Studies.

王新興有限公司董事總經理王惠貞女士，JP捐資港幣五百萬元，資助當代中國研究所領導的《香港通史》出版計劃。



▲ **30/10/2012**

Hong Kong General Tai Shan Clansmen Association Limited paid a visit to HKBU.

香港台山同鄉總會代表團到訪浸大。



▲ **6/11/2012**

A donation of HK\$1 million by Miss Zhang Jiachen, President of Jiachen Technology, was designated for the establishment of the Adaptive Learning Centre under the Faculty of Science.

嘉宸科技有限公司董事長張嘉宸小姐捐資港幣一百萬元，資助學院成立「智能計算聯合實驗室」。

▶ **9/11/2012**

A Brilliance of Civilization public lecture entitled "Sharing on Business Management and Philosophy of Culture" was delivered by Dr. Simon Suen, JP.

大學舉行「文明的光輝：孫少文博士，JP公開講座——創業經驗及文化理念分享」。



◀ **12/11/2012**

The Grand Opening Ceremony of Academic and Administration Building and Naming Ceremony of Madam Kwok Chung Bo Fun Sports and Recreation Centre were held. The University received a donation of HK\$30 million from the Kwok Chung Bo Fun Charitable Fund in support of its Graduate School and student character development programmes.

教學及行政大樓開幕典禮暨郭鍾寶芬女士康體文娛中心命名典禮——郭鍾寶芬慈善基金捐資港幣三千萬元，用以資助研究院發展及培育學生品格項目。



◀ **13/11/2012**

A Brilliance of Civilization public lecture entitled "Is a Property Everything?" was delivered by Dr. Justin Chiu.

大學舉行「文明的光輝：趙國雄博士公開講座——有樓得天下？」。



#### ◀ 20/11/2012

The Institute of Creativity invited Professor Roy J. Glauber, Nobel Prize Winner in Physics 2005, to share on "Two Hundred Years of Light Waves, One Hundred Years of Light Quanta". The public lecture was sponsored by The Institute of Creativity – Dr. Hung Hin Shiu Development Fund.

創意研究院邀請二零零五年諾貝爾物理學獎得主羅伊·格勞伯教授主持公開講座，與浸大師生交流分享——活動由「創意研究院—孔憲紹博士發展基金」贊助。

#### ▼ 4/12/2012

The Hong Kong Baptist University Foundation held a dinner reception to express the University's appreciation for the steadfast support of Foundation members and friends of the University.

香港浸會大學基金設宴款待基金會員及浸大友好，以感謝他們對大學的鼎力支持。



#### ◀ 15/12/2012

The Naming Ceremony of Tsang Chan Sik Yue Auditorium was held. The University received a donation of HK\$10 million from the Tsang Shiu Tim Charitable Foundation in support of the Campus Master Plan.

曾陳式如會堂命名典禮——曾肇添慈善基金捐資港幣一千萬元，支持校園總體發展規劃。

#### ▶ 20/12/2012

The Thanksgiving Service and Naming Ceremony of Mr. and Mrs. Y.K. Jim Christian Worship and Classroom was held. The University received a donation of US\$540,000 from the Y.K. Jim Charitable Foundation in support of the Campus Master Plan and the University Development Fund.

詹應堃、林少容伉儷基督教活動及教室命名典禮暨感恩崇拜——詹應堃慈善基金捐資五十四萬美元，支持校園總體發展規劃及大學發展基金。



# Financial Report 財務報告

For the period from 1 July 2011 to 30 June 2012  
由2011年7月1日至2012年6月30日止

		Campus Development 校園發展	Endowment Funds 不可動用本金之捐贈基金	Other Funds 其他基金	Matching Grants 配對補助金	Total 總計
		HK\$'000	HK\$'000	HK\$'000 (Note 註 a)	HK\$'000 (Note 註 c)	HK\$'000 (Note 註 d)
<b>Fund Balance as at 01/07/2011</b> <b>2011年7月1日基金結餘</b>	(i)	<b>740</b>	<b>442,500</b>	<b>65,967</b>	<b>106,830</b>	<b>616,037</b>
<b>Income 收入</b>						
Donations 捐款 (Note 註 b)		192	27,317	53,978	-	81,487
Matching Grants 配對補助金		-	-	-	-	-
Total Donations/Grants 捐款及配對補助金總額	(ii)	192	27,317	53,978	-	81,487
Interest Income 利息收入		42	-	3,205	2,744	5,991
Realised Investment Income 已實現之投資收益		-	2,129	-	-	2,129
Unrealised Investment Loss 未實現之投資虧損		-	(25,545)	-	-	(25,545)
Total Investment Income / (Loss) 投資收益 / (虧損) 總額	(iii)	42	(23,416)	3,205	2,744	(17,425)
Total Income 總收入	(iv)=(ii)+(iii)	<b>234</b>	<b>3,901</b>	<b>57,183</b>	<b>2,744</b>	<b>64,062</b>
<b>Expenditure 支出</b>						
Campus Environment Facilities 校園設施		-	(88)	(15,000)	-	(15,088)
Teaching and Research Enhancement 教學及研究		-	(1,461)	(9,172)	(41,821)	(52,454)
Academic and Strategic Niche Area Development 學術及策略定位發展		-	(333)	(10,671)	(2,520)	(13,524)
Internationalisation and Student Exchange 國際化及學生交流		-	(678)	(75)	-	(753)
Student Development 學生發展		-	(858)	(7,069)	-	(7,927)
Scholarships, Prizes and Bursaries 獎學金、獎金及助學金		-	(11,125)	(11,402)	-	(22,527)
Operating and Administrative Expenses 營運及行政支出		-	-	(3,592)	-	(3,592)
Others 其他		(3)	(507)	(695)	-	(1,205)
Total Expenditure 總支出	(v)	<b>(3)</b>	<b>(15,050)</b>	<b>(57,676)</b>	<b>(44,341)</b>	<b>(117,070)</b>
Net Income/(Expenditure) 淨收入 / (支出)	(vi)=(iv)+(v)	<b>231</b>	<b>(11,149)</b>	<b>(493)</b>	<b>(41,597)</b>	<b>(53,008)</b>
Support to the University Recurrent Budget as approved by the Council 經校董會批准撥款支持大學的經常性開支	(vii)	-	<b>(16,800)</b>	-	-	<b>(16,800)</b>
<b>Fund Balance as at 30/6/2012</b> <b>2012年6月30日基金結餘</b>	(viii)=(i)+(vi)+(vii)	<b>971</b>	<b>414,551</b>	<b>65,474</b>	<b>65,233</b>	<b>546,229</b>

Note :

- (a) The donations with designated purposes specified by the donors have been fully transferred to the accounts designated for such purposes and are thus regarded as fully expended in this report.  
(b) During the period, the University has received a donated property acquired by the donor at a cost of \$20.8 million. It is the accounting policy of the University that donations in kind are not recognised in the Financial Statements.  
(c) The utilisation of Matching Grants is subject to the guidelines issued by the Education Bureau or University Grants Committee.  
(d) All investment portfolios held by appointed investment managers are stated at market value.

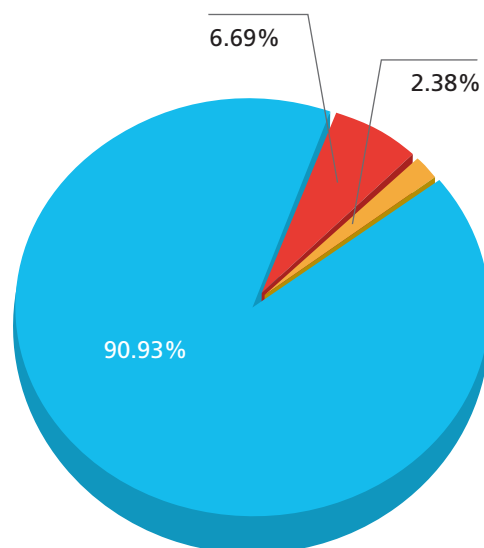
註 :

- (a) 有指定用途之捐款已根據捐贈者之意願撥入有關帳戶，故此類捐款於此報告內已被視作支出。  
(b) 大學於年內獲一物業捐贈，此物業由捐贈者以港幣二千零八十萬元購入。按大學現行會計政策，非現金捐助一概不列於財務報表上。  
(c) 配對補助金之用途根據教育局或大學教育資助委員會的指引制定。  
(d) 由委任的投資經理管理之投資組合均按市值入帳。

## Summary of Income and Expenditure for the year ended 30 June 2012 截至2012年6月30日的收入與支出分析

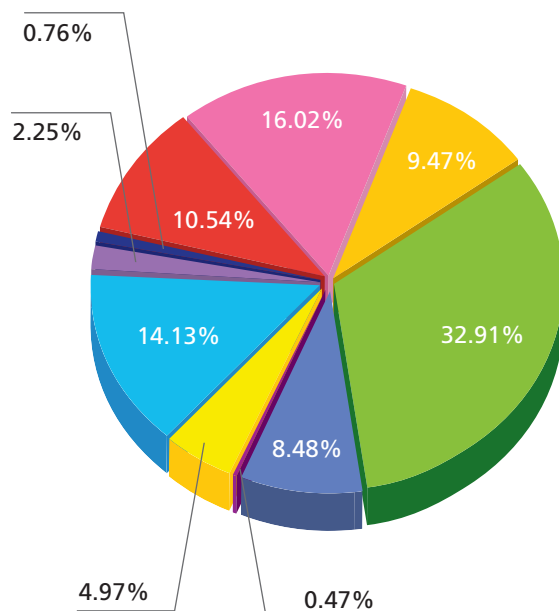
### Income 收入

	Amount 金額 HK\$'000
Donations 捐款	81,487
Interest Income 利息收入	5,991
Realised Investment Income 已實現之投資收益	2,129
<b>Total Income 總收入</b>	<b>89,607</b>



### Expenditure 支出

	Amount 金額 HK\$'000
Campus Environment Facilities 校園設施	15,088
Teaching and Research Enhancement 教學及研究	52,454
Academic and Strategic Niche Area Development 學術及策略定位發展	13,524
Internationalisation and Student Exchange 國際化及學生交流	753
Student Development 學生發展	7,927
Scholarships, Prizes and Bursaries 獎學金、獎金及助學金	22,527
Operating and Administrative Expenses 營運及行政支出	3,592
Others 其他	1,205
Support to the University Recurrent Budget as approved by the Council 經校董會批准撥款支持大學的經常性開支	16,800
Unrealised Investment Loss 未實現之投資虧損	25,545
<b>Total Expenditure 總支出</b>	<b>159,415</b>



## Membership Privileges 會員權益及優惠

All members are entitled to the following exclusive privileges:

- A Certificate of Appreciation from the Hong Kong Baptist University Foundation;
- Invitations to the Foundation's gatherings;
- Privileges and benefits offered by HKBU to members\*;
- Invitations to official events and ceremonies organised by HKBU;
- Regular news and updates from HKBU;
- Members who have contributed HK\$1 million or more will have their names inscribed on a commemorative Donors' Plaque displayed prominently on the University's campus.

\* For details, please visit <http://foundation.hkbu.edu.hk>.

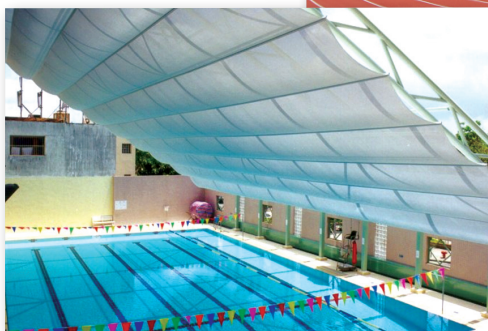
On behalf of HKBU, we cordially invite you to join the Hong Kong Baptist University Foundation. You can furnish support in many ways, including contributions to endowment funds, gifts of real estates, life insurance schemes, shares, bonds, and bequests. Donations can be designated for specific causes and projects.

會員將會獲得下列尊享權益及優惠：

- 將獲頒發香港浸會大學基金證書；
- 將獲邀出席基金的聚會；
- 可享有浸大為基金成員提供的各種福利\*；
- 將獲邀出席浸大主辦的活動及典禮；
- 將會定期收到浸大的最新資訊；
- 如蒙捐資港幣一百萬元或以上，其芳名將會恭泐於本校的「捐贈人芳名榜」上，以垂永紀。

\* 詳情請瀏覽<http://foundation.hkbu.edu.hk>。

我們謹代表浸大誠邀閣下成為香港浸會大學基金的一份子。歡迎閣下以不同方式支持浸大，包括設立永久基金，或以物業、壽險、股票、債券及遺產等形式捐贈。捐款可用以支持指定項目及計劃或大學整體發展。



## How to Give 捐資方法

If you would like to offer us your support, please complete the Confirmation of Donation form together with a cheque payable to "Hong Kong Baptist University Foundation" and mail them to the University Advancement office, Hong Kong Baptist University, Kowloon Tong, Hong Kong.

如蒙支持浸大發展，敬請填妥捐款同意書連同捐款支票，支票抬頭請寫上「香港浸會大學基金」，並郵寄至香港九龍塘香港浸會大學發展事務處。

### Confirmation of Donation 捐款同意書

Name 姓名：\_\_\_\_\_ (English) \_\_\_\_\_ (中文)

Title/Position 職銜：\_\_\_\_\_ (English) \_\_\_\_\_ (中文)

Organisation 機構：\_\_\_\_\_ (English) \_\_\_\_\_ (中文)

Name on Receipt：\_\_\_\_\_ (English)

捐款收據名稱：\_\_\_\_\_ (中文)

Office Tel. 辦公室電話：\_\_\_\_\_ Mobile 手提：\_\_\_\_\_

E-mail Address 電郵地址：\_\_\_\_\_ Fax 傳真：\_\_\_\_\_

Correspondence Address 通訊地址：\_\_\_\_\_

I/Our Organisation wish(es) to endow the University via the Foundation:

本人/本機構樂意透過基金向大學捐資：

HK\$5,000,000

HK\$1,000,000

HK\$500,000

HK\$250,000

HK\$150,000

HK\$50,000

HK\$20,000

Others其他 (Please specify請註明) HK\$\_\_\_\_\_

Purpose(s) of Donation 捐款用途

Institutional Advancement 大學整體發展

Designated Purposes 特定用途

Campus Master Plan 校園總體發展規劃

Teaching and Research Projects 教研項目

Internationalisation 校園國際化

Student Scholarships/Bursaries 學生獎學金/助學金

Others其他 (Please specify 請註明) \_\_\_\_\_

I / The signatory below hereby understand(s) and agree(s) that Hong Kong Baptist University will apply for a Matching Grant from the Education Bureau or University Grants Committee with the donation made by me / our organisation.

本人 / 下列授權簽署人士明白並同意香港浸會大學向教育局或大學教育資助委員會就本人 / 本機構的資助申請「配對補助金」。

I  wish /  do not wish my name/the name of our organisation to be disclosed for acknowledgement purposes via the University publications or webpage.

本人 / 本機構  願意 /  不願意接受大學透過刊物或網頁鳴謝是項捐助。

Donor/Authorised Representative of Organisation 捐贈人 / 機構之授權代表

Date 日期

The above information will only be used by the University for donation related purposes. 上述一切資料只供香港浸會大學使用於有關捐款事宜上。

## Foundation Secretariat 基金秘書處

Address 地址 : University Advancement Office, Hong Kong Baptist University  
Kowloon Tong, Kowloon, Hong Kong  
香港 九龍塘 香港浸會大學 發展事務處

Telephone 電話 : (852) 3411 7878 / (852) 3411 7879 / (852) 3411 7786

Fax 傳真 : (852) 3411 5689

Email 電郵 : [hkbuf@hkbu.edu.hk](mailto:hkbuf@hkbu.edu.hk)

Website 網址 : [foundation.hkbu.edu.hk](http://foundation.hkbu.edu.hk)

